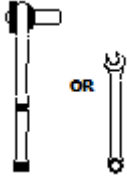


**IMPORTANT:**

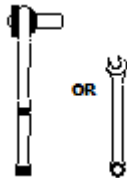
*Manufacturer is not responsible for negligent use of vehicle with mud flaps installed, including over-tightening of screws and bolts causing damage to vehicle or mud flaps.*



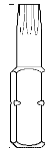
**TOOLS REQUIRED-**



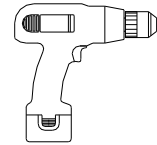
7/16" Open Wrench or  
Socket Wrench



1/2" Open Wrench or  
Socket Wrench



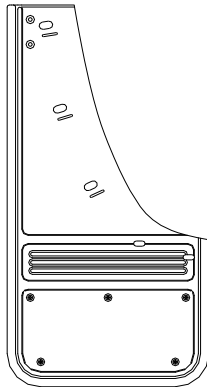
T15  
Bit



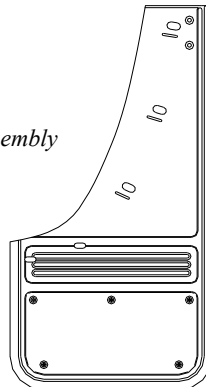
Electric or Rechargeable  
Drill

**FLAPS**

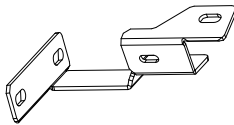
(1) Flap Assembly,  
Front, DS



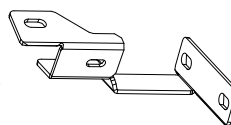
(1) Flap Assembly  
Front, PS



(1) Bracket  
Front, DS  
Part #771066



(1) Bracket  
Front, PS  
Part #771067

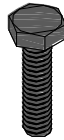


**PARTS BAG # 771068**

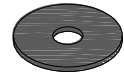
**a)** (6) Capscrew, SS  
1/4"-20 x 5/8" Black Oxidized  
Part #014071



**b)** (4) Capscrew, SS  
1/4"-20 x 1" Black Oxidized  
Part #014073



**c)** (4) Washer, Flat, SS  
0.281" x 1" Black Oxidized  
Part #018069



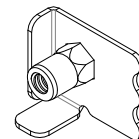
**d)** (6) Washer, Slotted, SS  
0.281" x 1.5" Black Oxidized  
Part # 018084



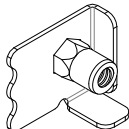
**e)** (4) Spring Nut, SS  
1/4"-20UNC, 27/32" Reach  
Part # 028011



**f)** (3) Mount Clip, SS  
Driver Side  
Part #769312

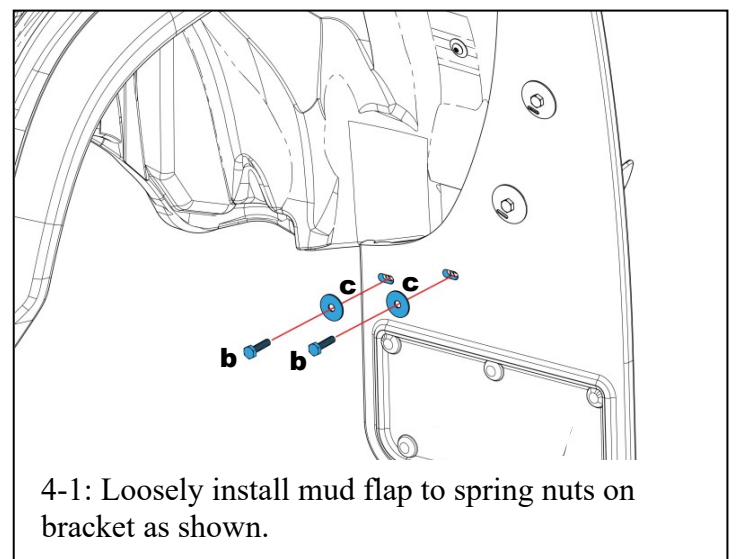
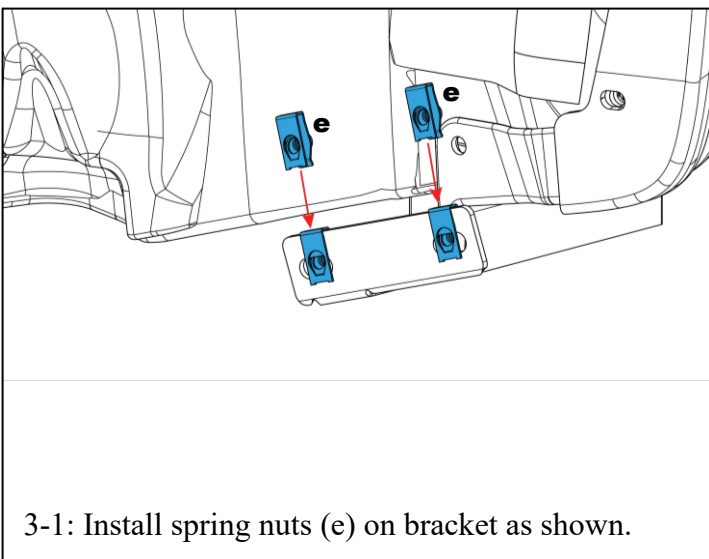
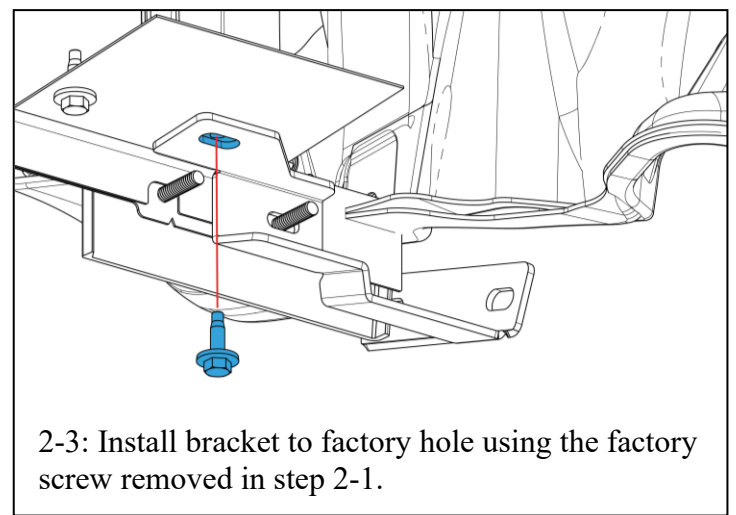
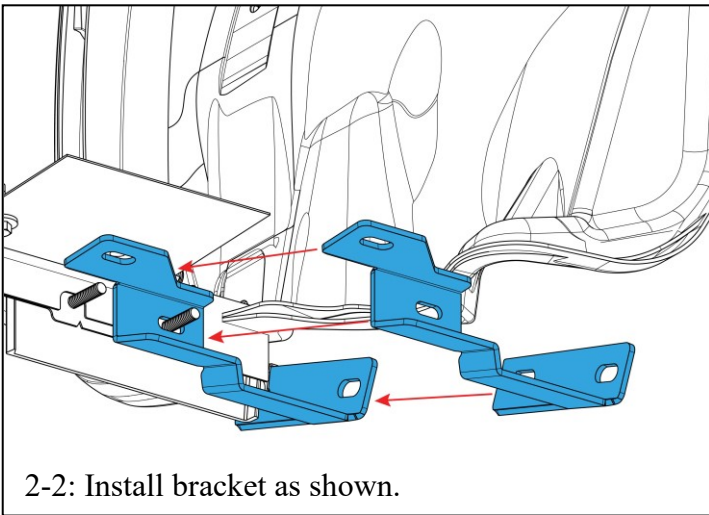
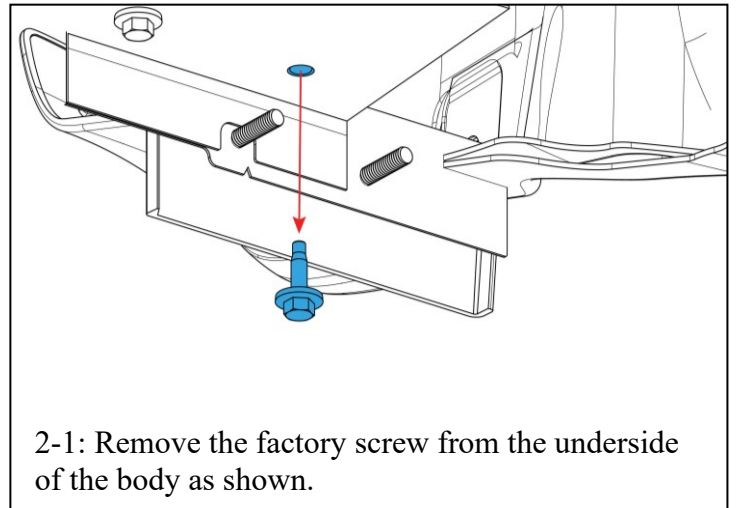
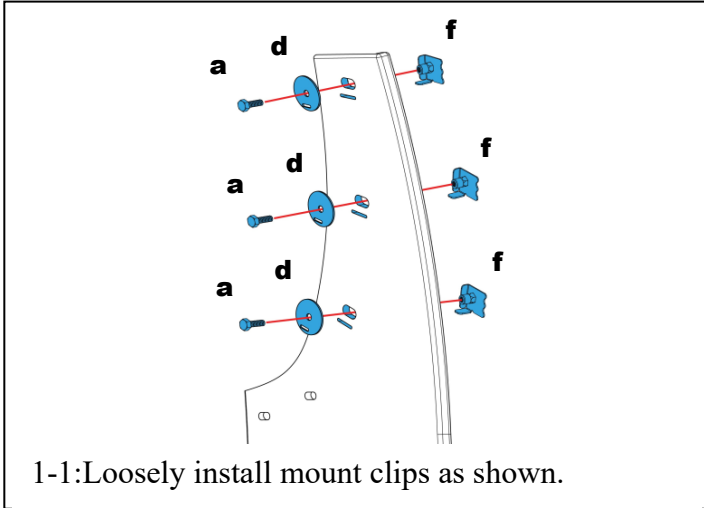


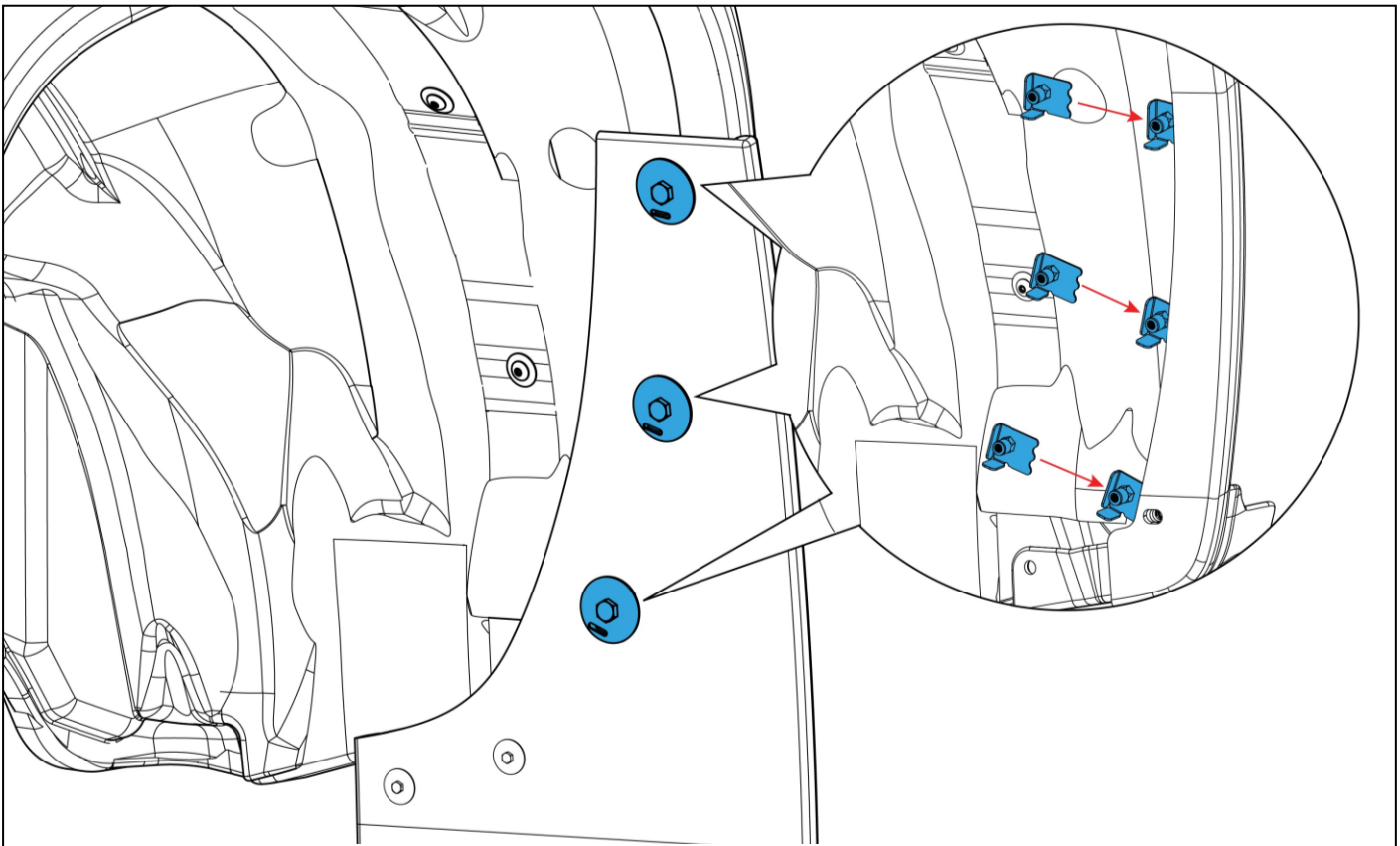
**g)** (3) Mount Clip, SS  
Passenger Side  
Part #769313



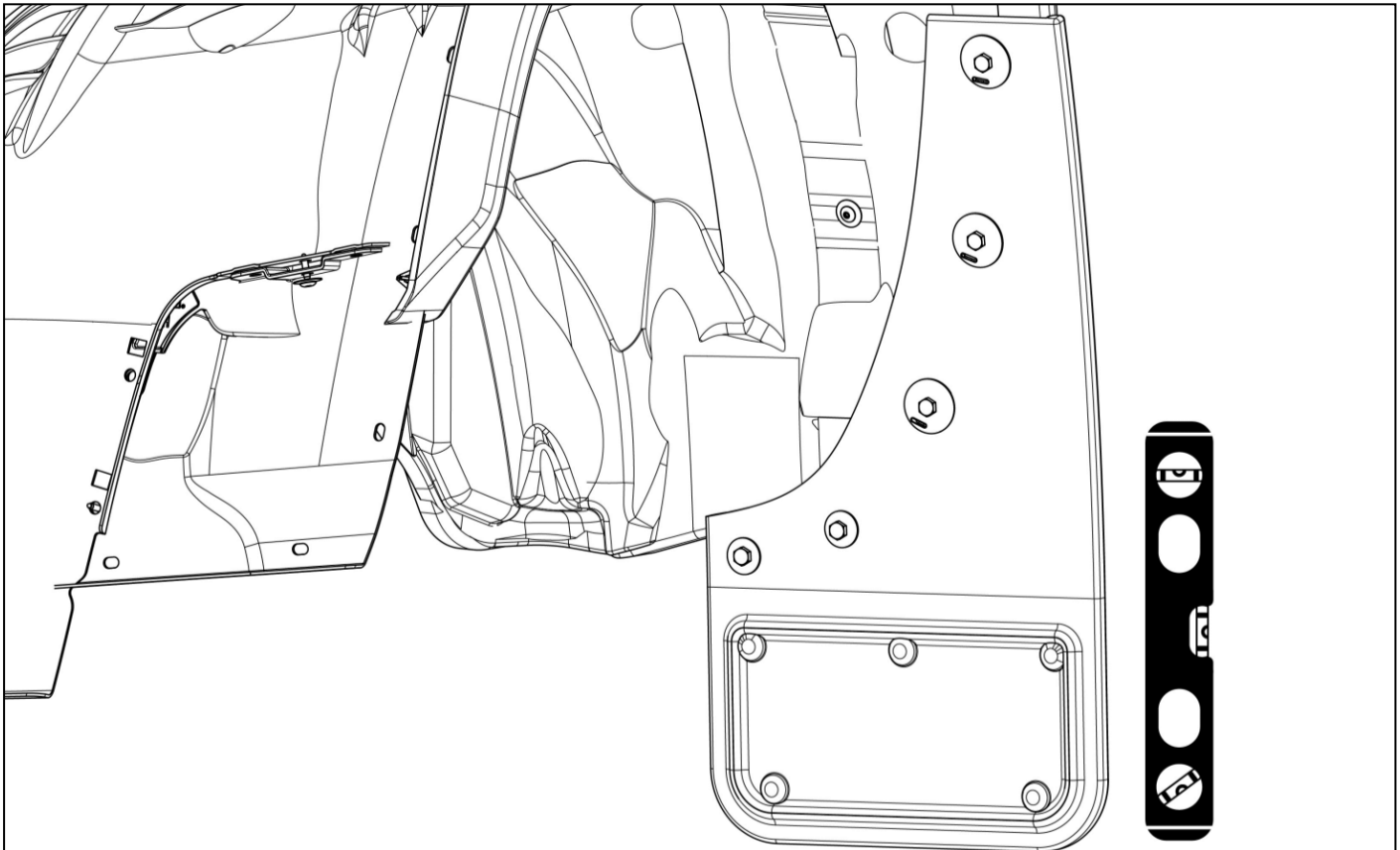
## INSTALLATION *(For ease of installation it is suggested that the wheel be removed)*

1. Before you install your Mud Flap Set, see the diagram and parts list for all necessary parts. Start on the driver side.





5-1: Slide mount clips behind fender lip.



6-1: Using a square or other leveling tool, ensure that the mud flap is level. Tighten all fasteners.

Please check out our YouTube channel to see an install video for this application.

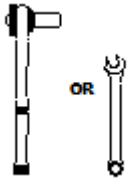


### IMPORTANT :

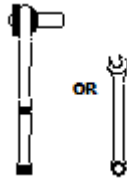
**Le fabricant n'est pas responsable de l'utilisation négligente du véhicule avec garde-boue installés, y compris du serrage excessif des vis et des boulons causant des dommages au véhicule ou aux garde-boue.**



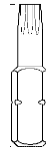
### OUTILS REQUIS-



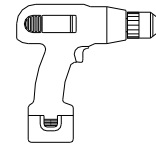
Clé ouverte de 7/16" ou clé à douille



Clé ouverte de 1/2" ou clé à douille



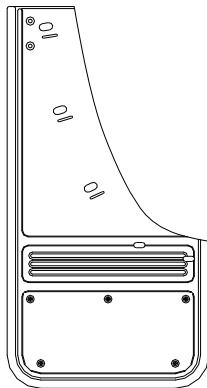
Foret T15



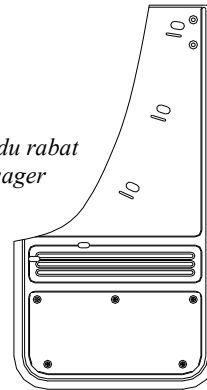
Perceuse électrique ou rechargeable

### RABATS

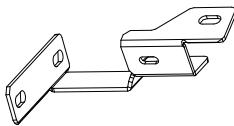
(1) Assemblage du rabat, Avant, siège conducteur



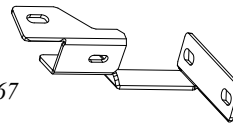
(1) Assemblage du rabat Avant, siège passager



(1) Support crochet Avant, siège conducteur  
Numéro de pièce 771066



(1) Support crochet Avant, siège passager  
Numéro de pièce 771067

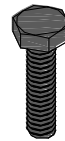


### SAC DE PIÈCES N° 771068

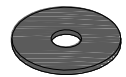
a) (6) Vis à capuchon, acier inox.  
1/4"-20 x 5/8" noire oxydée  
Numéro de pièce 014071



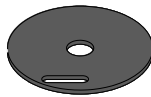
b) (4) Vis à capuchon, acier inox.  
1/4"-20 x 1" noire oxydée  
Numéro de pièce 014073



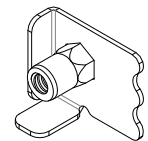
c) (4) Rondelle, plate, acier inox.  
0,281" x 1" noire oxydée  
Numéro de pièce 018069



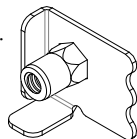
d) (6) Rondelle, à fente, acier inox.  
0,281" x 1,5" noire oxydée  
Numéro de pièce 018084



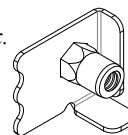
e) (4) Écrou à ressort, acier inox.  
1/4"-20UNC, 27/32" de portée  
Numéro de pièce 028011



f) (3) Clip de fixation, acier inox.  
Côté conducteur  
Numéro de pièce 769312



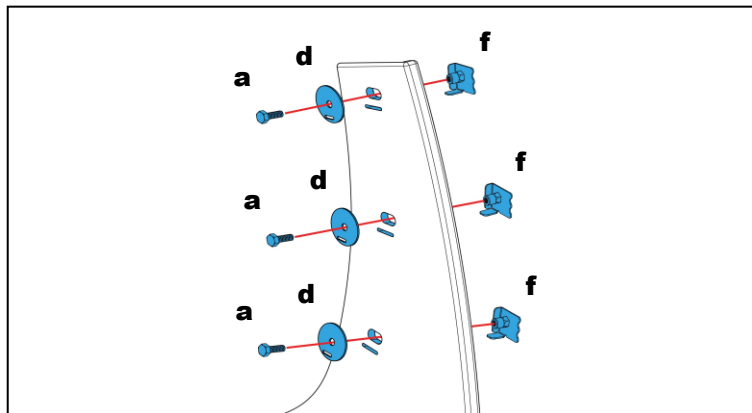
g) (3) Clip de fixation, acier inox.  
Côté passager  
Numéro de pièce 769313



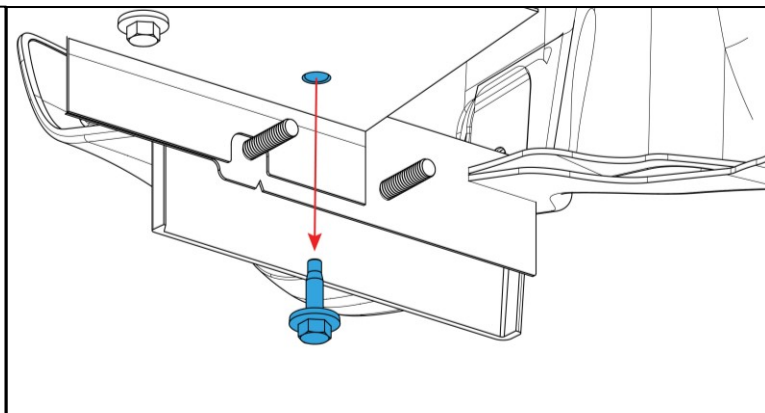


## INSTALLATION *(Pour faciliter l'installation, il est suggéré de retirer la roue)*

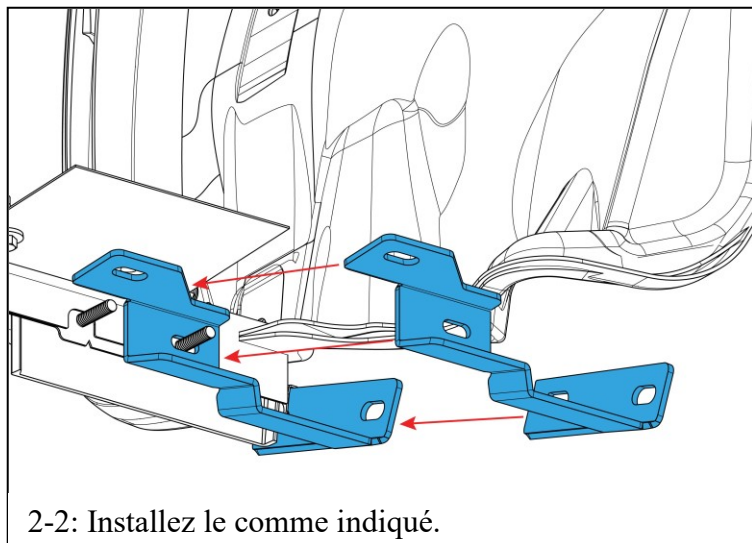
1. Avant d'installer votre jeu de garde-boue, consultez le schéma et la liste des pièces pour vous assurer d'avoir toutes les pièces nécessaires. Commencez par le côté conducteur.



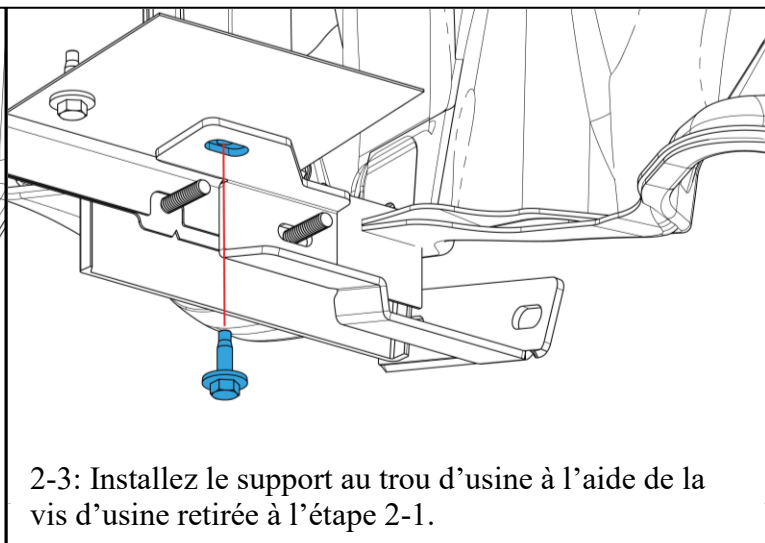
1-1: Installez sans serrer les clips de montage sur les trous de garde-boue n° 1 à n° 3 à l'aide d'une vis à capuchon (a) et d'une rondelle fendue (d).



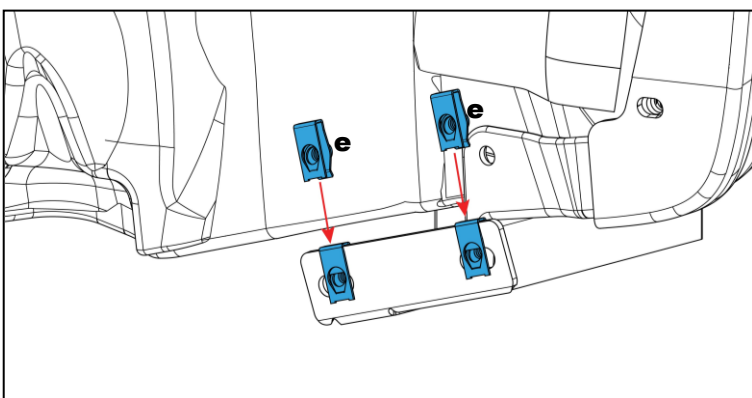
2-1: Retirez la vis d'usine du dessous du corps comme indiqué.



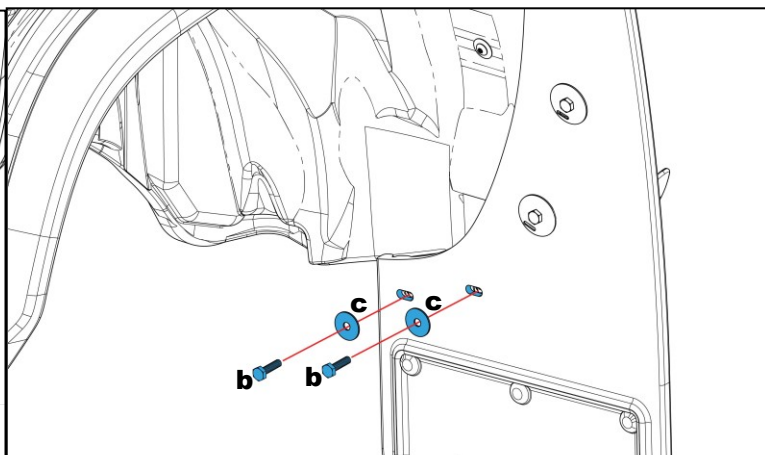
2-2: Installez le comme indiqué.



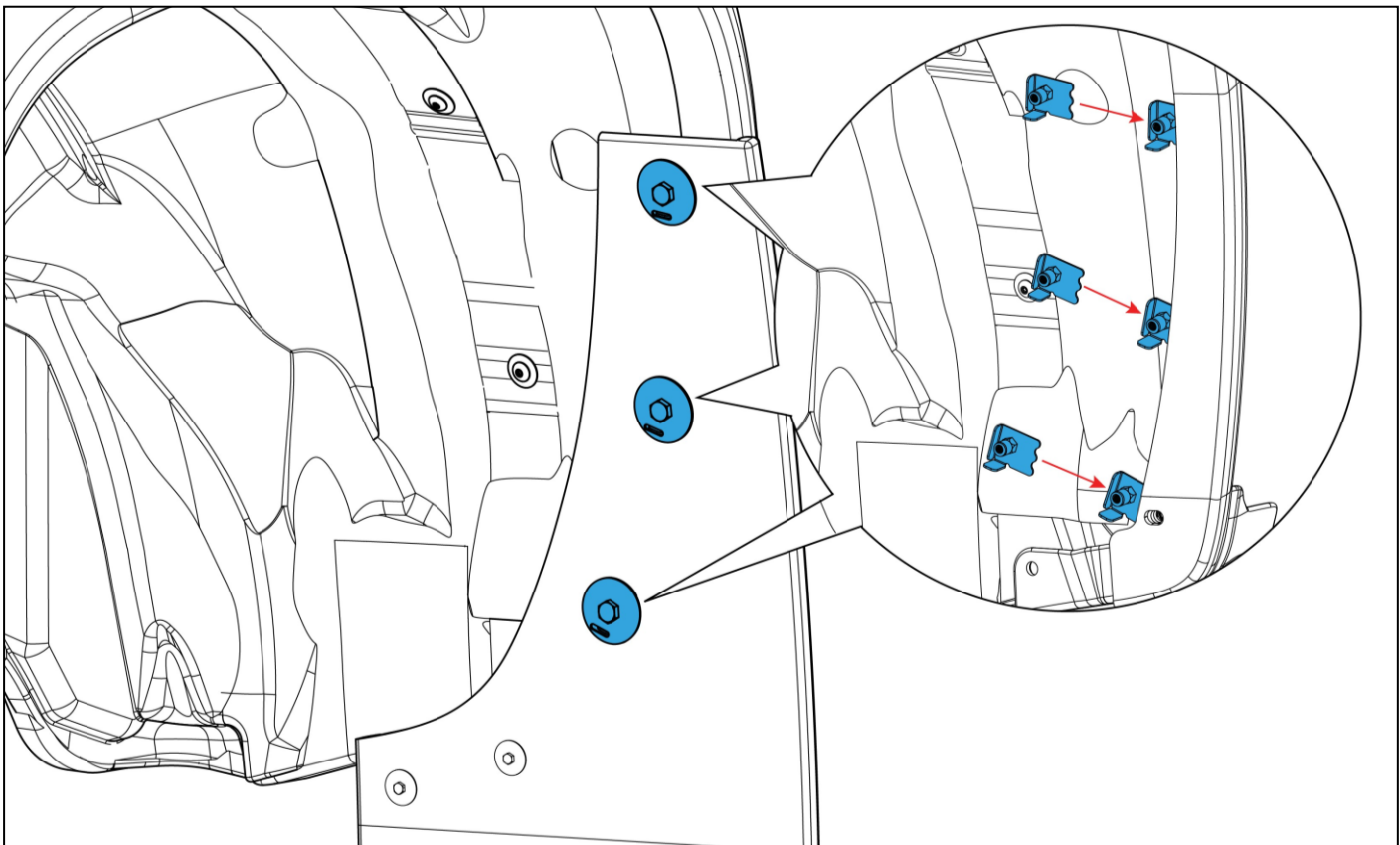
2-3: Installez le support au trou d'usine à l'aide de la vis d'usine retirée à l'étape 2-1.



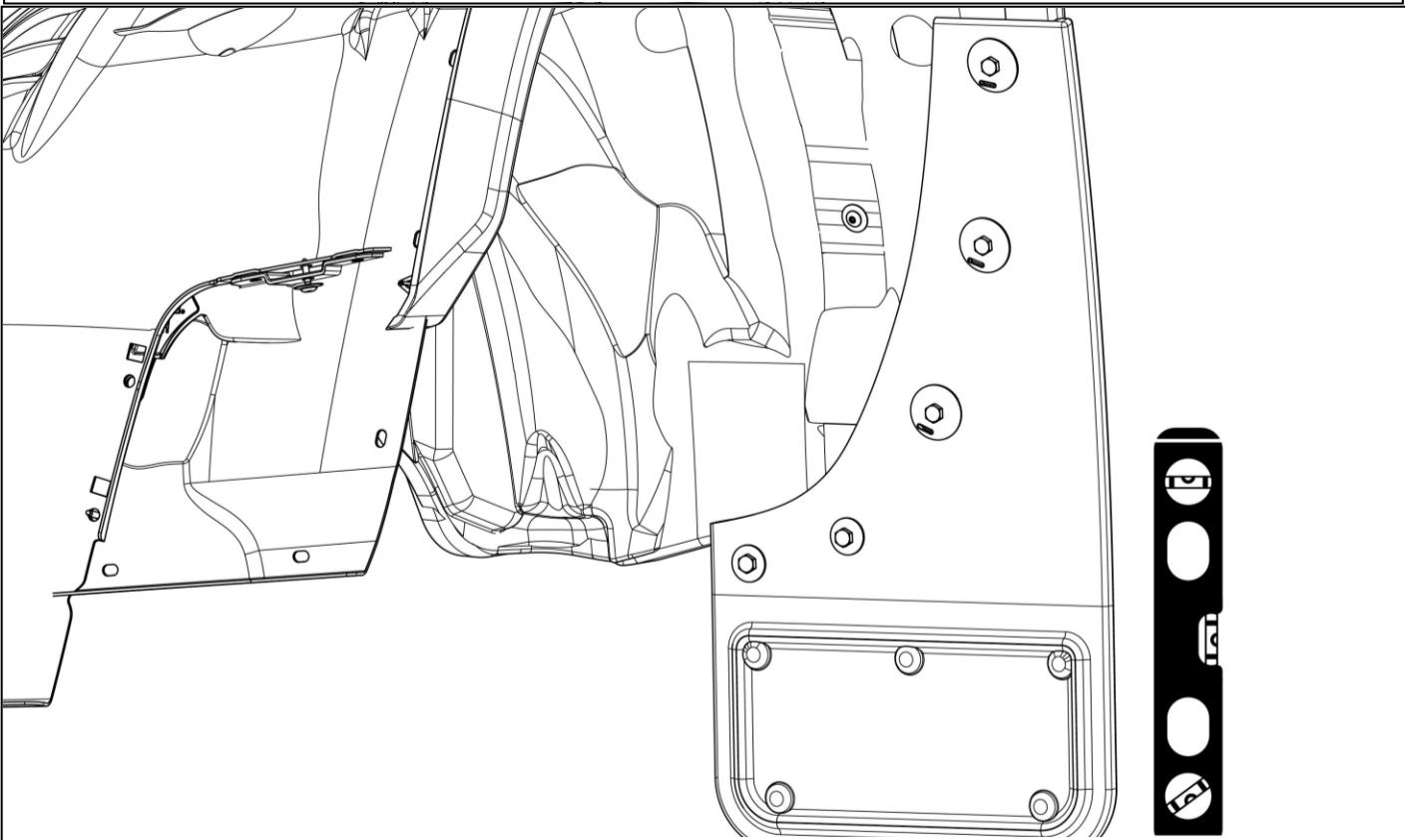
3-1: Installez les écrous à ressort (e) sur le support comme illustré.



4-1: Installez sans serrer les trous du rabat n° 4 et n° 5 sur les écrous à ressort du support à l'aide d'une vis à capuchon (b) et d'une rondelle plate (c).



5-1: Slide mount clips behind fender lip.



6-1: À l'aide d'une équerre ou d'un autre outil de nivellement, assurez-vous que le rabat est de niveau.  
Serrez toutes les fixations.



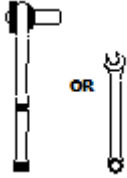
**2023-C GMC Canyon**  
**Mud Flap Set, Rear**  
**Mounting Diagram & Instructions**  
**Kit# GCR212R**

**IMPORTANT:**

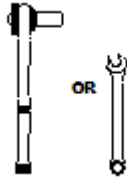
*Manufacturer is not responsible for negligent use of vehicle with mud flaps installed, including over-tightening of screws and bolts causing damage to vehicle or mud flaps.*



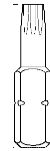
**TOOLS REQUIRED-**



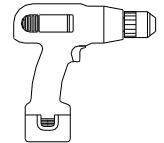
*7/16" Open Wrench or  
Socket Wrench*



*1/4" Open Wrench or  
Socket Wrench*



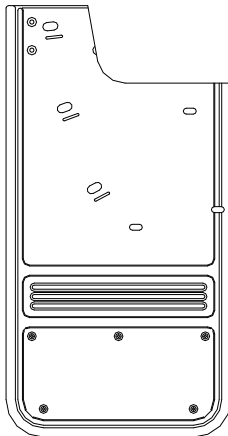
*T15  
Bit*



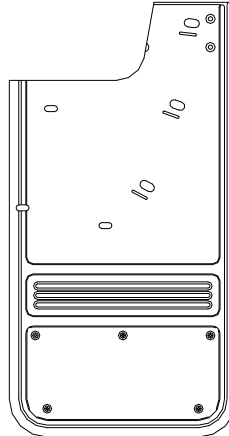
*Electric or Rechargeable  
Drill*

**FLAPS**

*(1) Flap Assembly,  
Rear, DS*



*(1) Flap Assembly,  
Rear, PS*



**PARTS BAG # 771069**

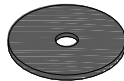
*a) (6) Capscrew, SS  
1/4"-20 x 5/8" Black Oxidized  
Part #014071*



*b) (6) Sheet Metal Screw, SS  
8-18 x 1" Black Oxidized  
Part #016055*



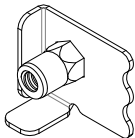
*c) (6) Washer, Flat, SS  
0.203" x 1" Black Oxidized  
Part #018070*



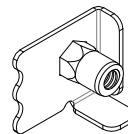
*d) (6) Washer, Slotted, SS  
0.281" x 1.5" Black Oxidized  
Part # 018084*



*e) (3) Mount Clip, SS  
Driver Side  
Part #769312*

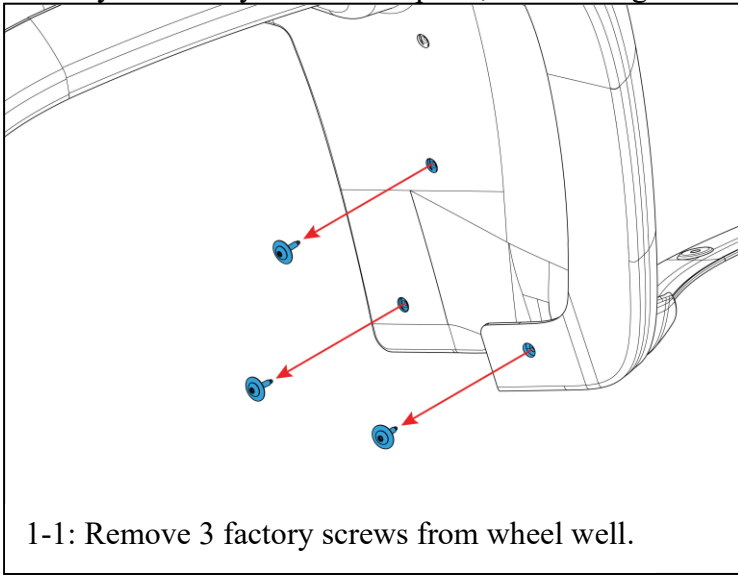


*f) (3) Mount Clip, SS  
Passenger Side  
Part #769313*

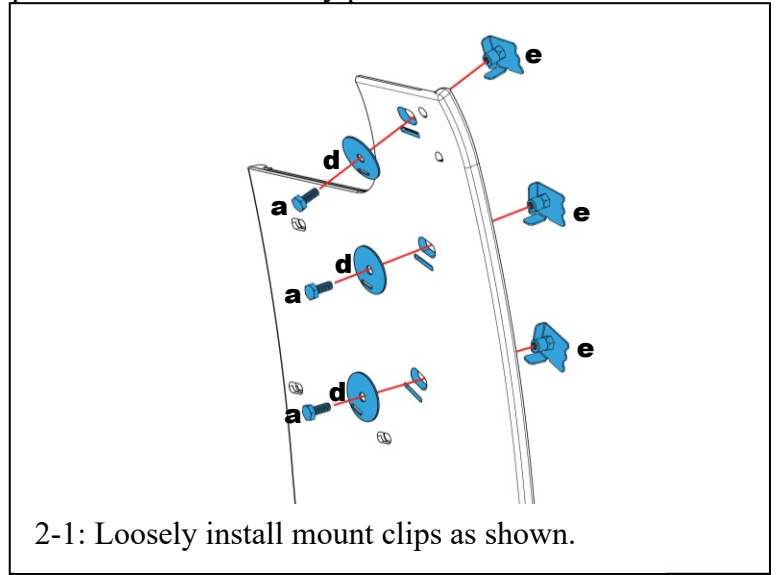


## INSTALLATION *(For ease of installation it is suggested that the wheel be removed)*

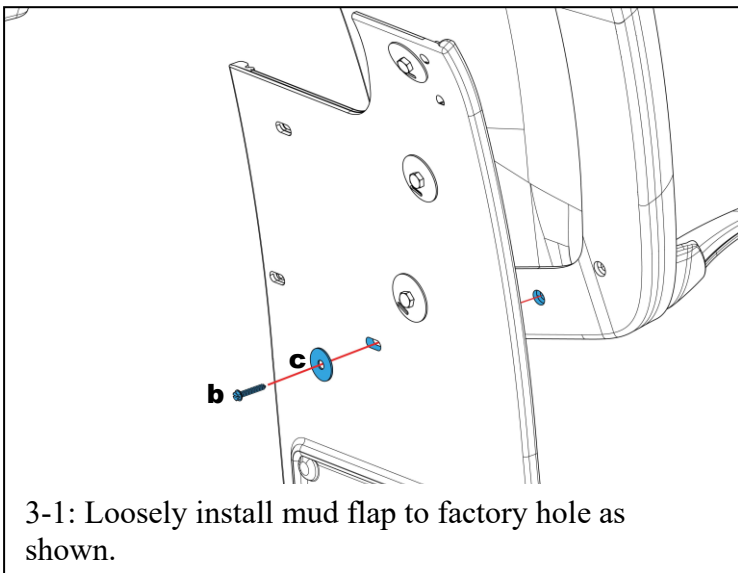
Before you install your Mud Flap Set, see the diagram and parts list for all necessary parts. Start on the driver's side.



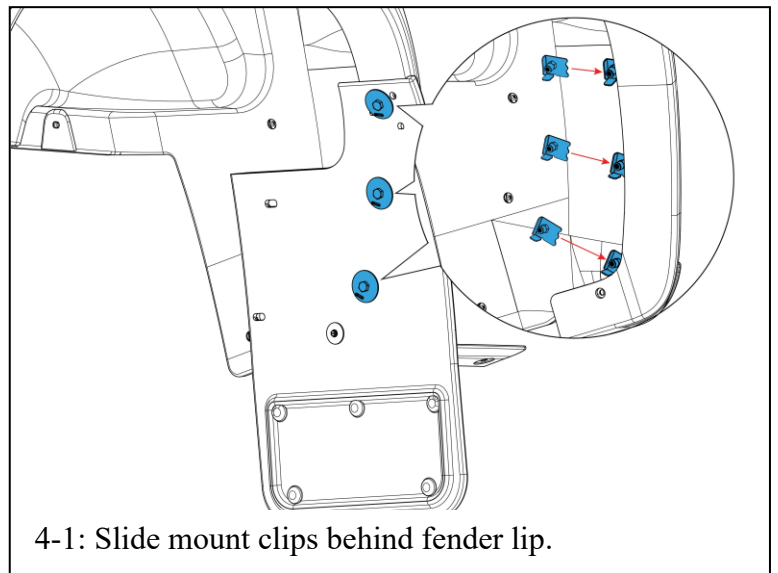
1-1: Remove 3 factory screws from wheel well.



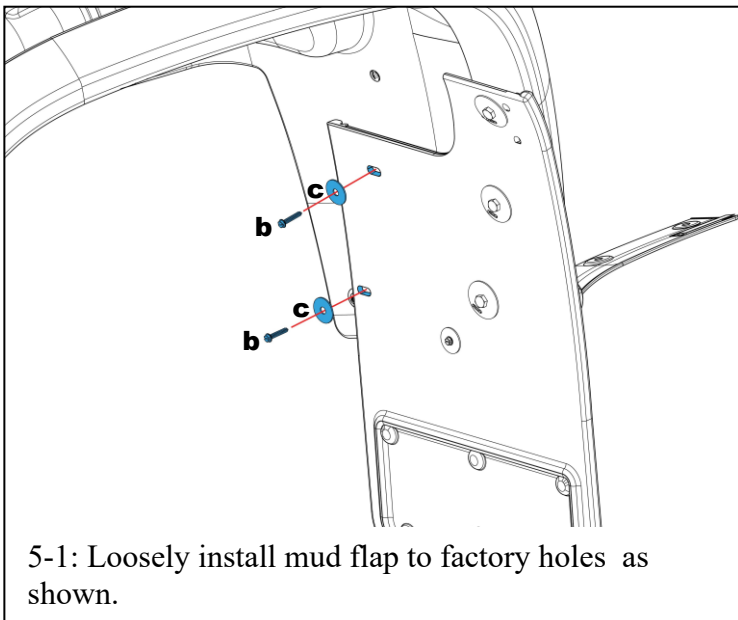
2-1: Loosely install mount clips as shown.



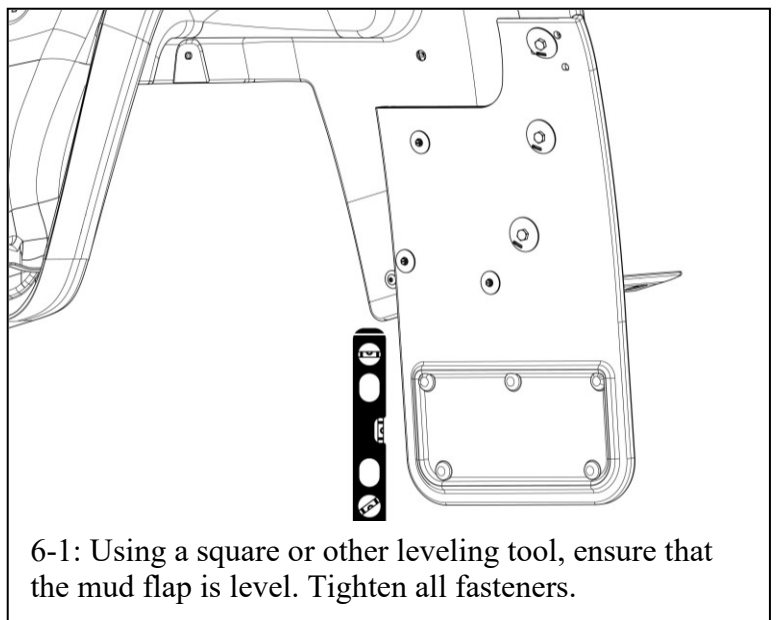
3-1: Loosely install mud flap to factory hole as shown.



4-1: Slide mount clips behind fender lip.



5-1: Loosely install mud flap to factory holes as shown.



6-1: Using a square or other leveling tool, ensure that the mud flap is level. Tighten all fasteners.

Please check out our YouTube channel to see an install video for this application.







# GATORBACK

## MUDFLAPS

## 2023-C GMC Canyon

### Jeu de garde-boue, arrière

### Schéma de montage et instructions

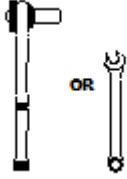
### Kit n° GCR212R

#### IMPORTANT :

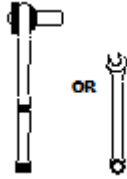
Le fabricant n'est pas responsable de l'utilisation négligente du véhicule avec garde-boue installés, y compris du serrage excessif des vis et des boulons causant des dommages au véhicule ou aux garde-boue.



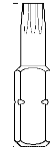
#### OUTILS REQUIS-



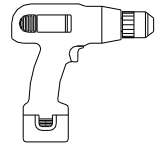
Clé ouverte de 7/16" ou  
clé à douille



Clé ouverte de 1/4" ou  
clé à douille



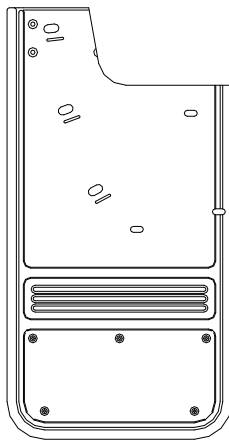
Foret T15



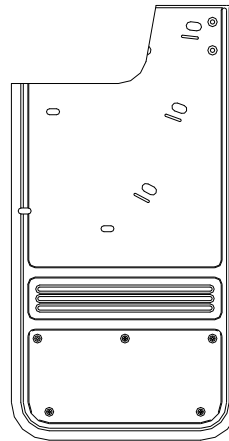
Perceuse électrique ou rechargeable

#### RABATS

(1) Assemblage du rabat,  
Arrière, siège conducteur



(1) Assemblage du rabat  
Arrière, siège passager



#### SAC DE PIÈCES N° 771069

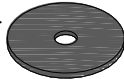
a) (6) Vis à capuchon, acier inox.  
1/4"-20 x 5/8" noire oxydée  
Numéro de pièce 014071



b) (6) Vis à tôle, acier inox.  
8-18 x 1" noire oxydée  
Numéro de pièce 016055



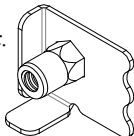
c) (6) Rondelle, plate, acier inox.  
0,203" x 1" noire oxydée  
Numéro de pièce 018070



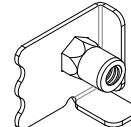
d) (6) Rondelle, à fente, acier inox.  
0,281" x 1.5" noire oxydée  
Numéro de pièce 018084



e) (3) Clip de fixation, acier inox.  
Côté conducteur  
Numéro de pièce 769312

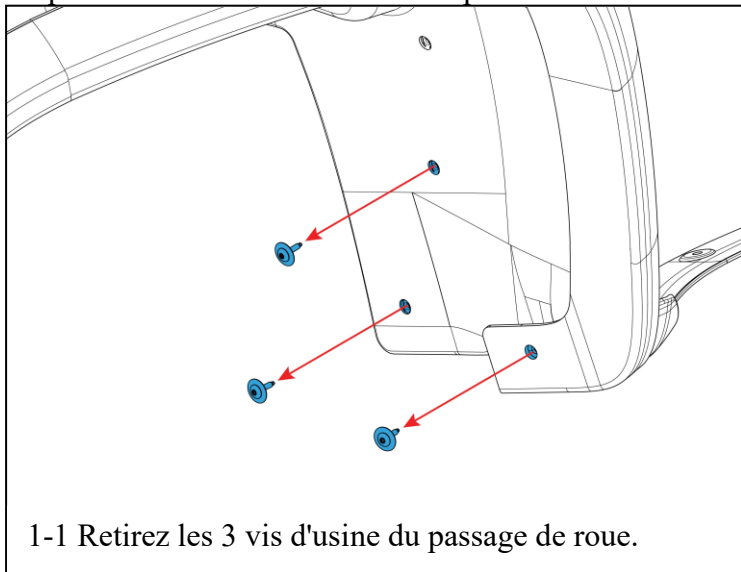


f) (3) Clip de fixation, acier inox.  
Côté passager  
Numéro de pièce 769313

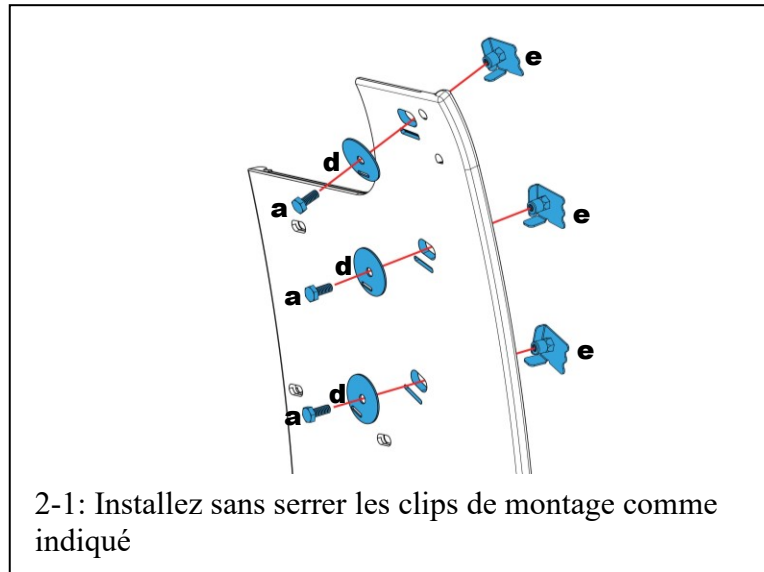


## INSTALLATION *(Pour faciliter l'installation, il est suggéré de retirer la roue)*

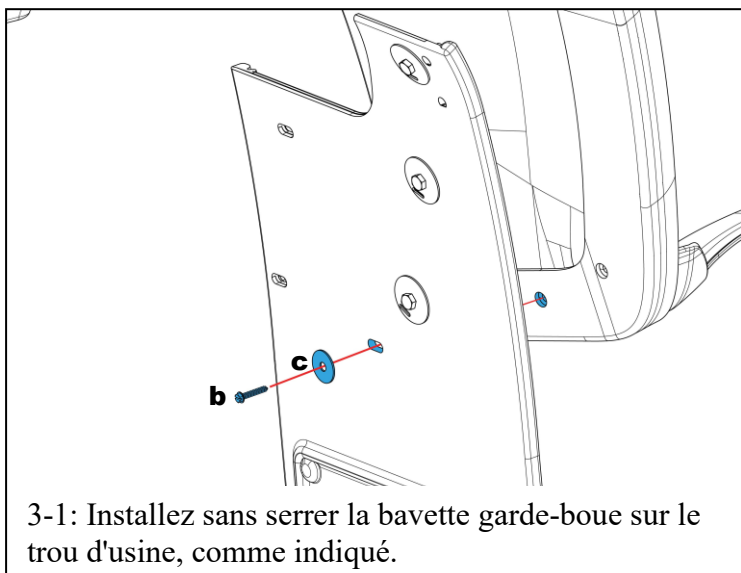
Avant d'installer votre jeu de garde-boue, consultez le schéma et la liste des pièces pour vous assurer d'avoir toutes les pièces nécessaires. Commencez par le côté conducteur.



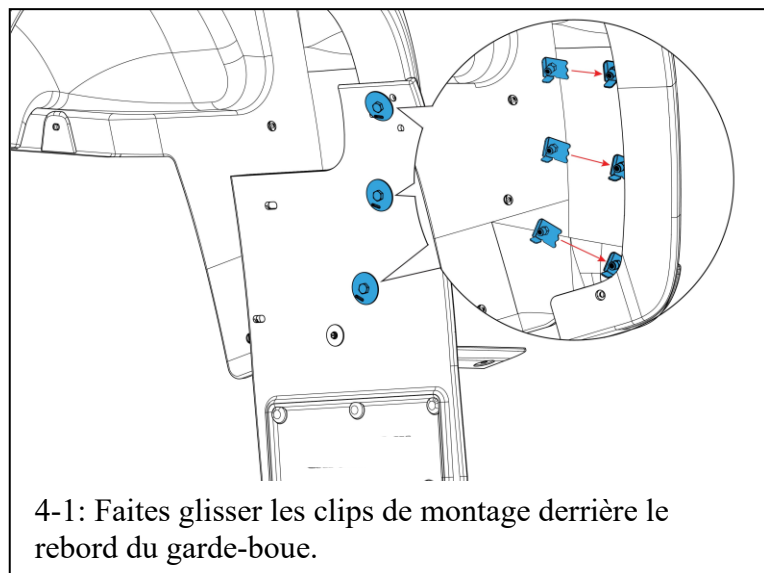
1-1 Retirez les 3 vis d'usine du passage de roue.



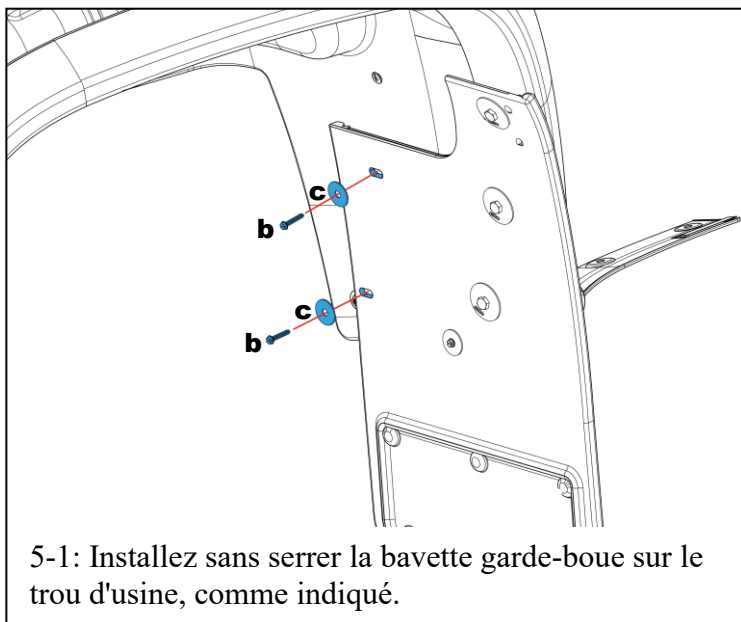
2-1: Installez sans serrer les clips de montage comme indiqué



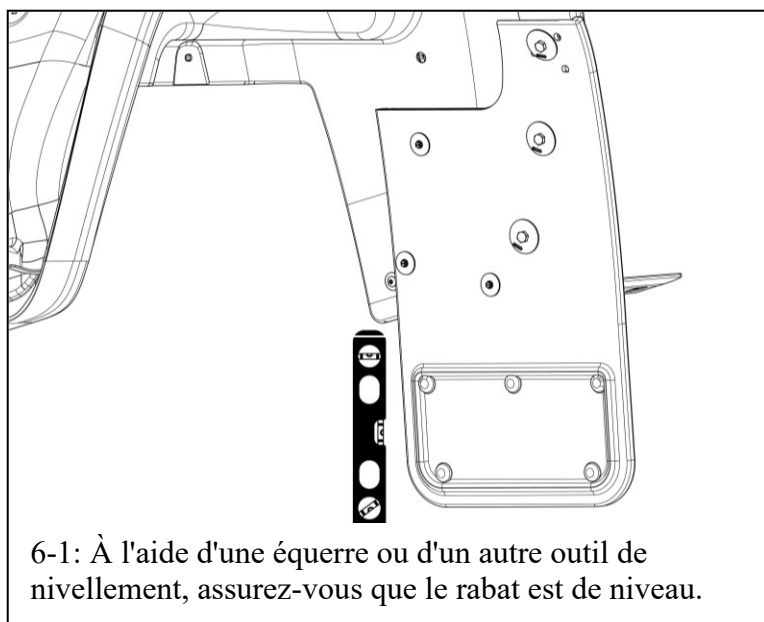
3-1: Installez sans serrer la bavette garde-boue sur le trou d'usine, comme indiqué.



4-1: Faites glisser les clips de montage derrière le rebord du garde-boue.



5-1: Installez sans serrer la bavette garde-boue sur le trou d'usine, comme indiqué.



6-1: À l'aide d'une équerre ou d'un autre outil de nivellement, assurez-vous que le rabat est de niveau.

Veillez consulter notre chaîne YouTube pour voir une vidéo d'installation de cette application.

