

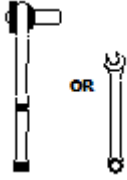


# 2024-C Traverse/Acadia Mud Flap Set, Front Mounting Diagram & Instructions Kit# GCR218F

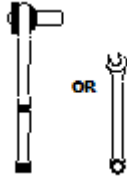
## IMPORTANT:

**Manufacturer is not responsible for negligent use of vehicle with mud flaps installed, including over-tightening of screws and bolts causing damage to vehicle or mud flaps.**

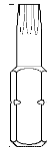
## TOOLS REQUIRED-



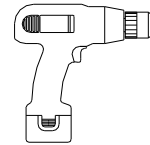
7/16" Open Wrench or  
Socket Wrench



1/4" Open Wrench or  
Socket Wrench



T15 Torx  
Bit



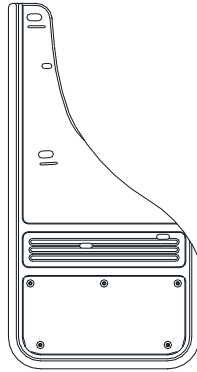
Electric or Rechargeable  
Drill



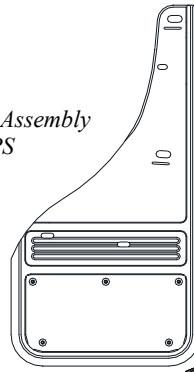
1/4" Drill  
Bit

## FLAPS

(1) Flap Assembly,  
Front, DS

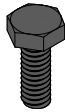


(1) Flap Assembly  
Front, PS

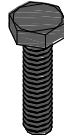


## PARTS BAG # 771249

**a) (4) Cap Screw**  
1/4-20 UNC x 5/8", Blk Ox.  
Part #014071



**b) (2) Cap Screw**  
1/4-20 UNC x 1", Blk Ox.  
Part #014073



**c) (2) Sht Metal Screw**  
#8-18 x 1.25", Blk Ox.  
Part #016061



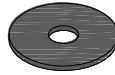
**d) (2) Sht Metal Screw**  
#8-18 x 1.5", Blk Ox.  
Part #016063



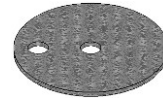
**e) (4) Spacer Washer**  
5/16" x 1" x 1/4" HDPE  
Part #018036



**f) (4) Washer, Flat**  
0.281" x 1" SS, Blk Ox.  
Part #018069



**g) (2) Washer, Offset**  
0.203" x 1.5" Blk Ox.  
Part #018080



**h) (4) Washer, Mud Flap Clip**  
0.281" x 1.5" Blk Ox.  
Part #018084



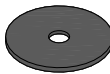
**i) (2) Washer, Flat**  
0.203" x 0.781" SS, Blk Ox.  
Part #018085



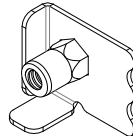
**j) (2) Nut, Nylock**  
1/4-20, SS  
Part # 025004



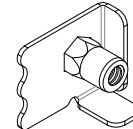
**k) (2) Washer, Nylon**  
0.203" x 0.885" Blk  
Part #054080



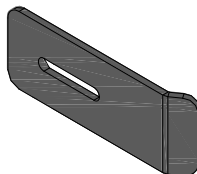
**l) (2) Mount Clip**  
Driver Side  
Part #769312



**m) (2) Mount Clip**  
Passenger Side  
Part #769313

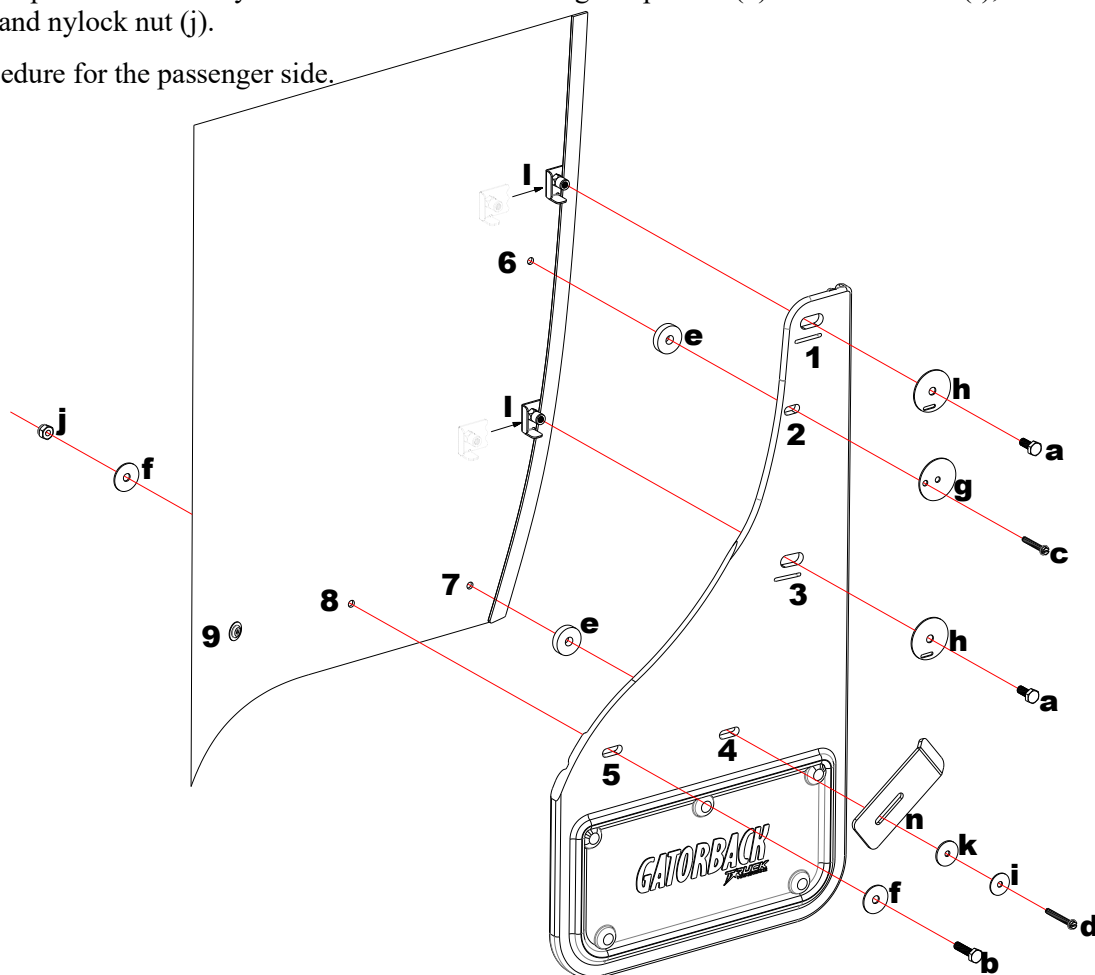


**n) (2) J-Clamp, Universal**  
1.5" x 4.5" Anod. Alum.  
Part #769802



## INSTALLATION *(For ease of installation it is suggested that the wheel be removed)*

1. Before you install your Mud Flap Set, see the diagram and parts list for all necessary parts. Start on the driver's side.
2. Remove the 2 factory screws from the fender holes 6 & 7. See Diagram.  
Note: The one removed from the liner will be reinstalled in a later step. If your vehicle has factory mud guards, they will need to be removed as well.
3. Loosely install mount clip (l) on holes #1 & #3 using a capscrew (a) and slotted washer (h)
4. Install mud flap hole #4 to the factory hole #7 using a machine screw (d), flat washer (i), nylon washer (k), and J-clamp (n), placing a spacer washer (e) between the rubber and the liner.
5. Slide mount clip on mud flap hole #3 behind the fender lip. Finger tighten.
6. Install mud flap hole #2 to the factory hole #6 using a machine screw (c) and offset washer (g), placing a spacer washer (e) between the rubber and the liner.  
Note: The machine screw is to be placed through the outside hole of the offset washer, with the washer aligned as shown in the diagram.
7. Slide mount clip on mud flap hole #1 behind the fender lip. Finger tighten.
8. With a square or other levelling tool, ensure that the mud flap is level.
9. Carefully tighten all fasteners and ensure that the flap has remained level. We suggest starting the machine screws that attach to factory mounting points. We also strongly suggest tightening these with hand tools, **not** power tools.  
Note: Pay close attention to the angle of the J-clamp. If not positioned correctly, the mud flap won't sit flush.
10. Once everything is secure, remove factory screw from hole #9 to allow more movement in the liner for drilling. Hold the mud flap tight to the wheel well and use mud flap hole #5 as a guide to drill a 1/4" hole into the factory liner. This becomes hole #8. Reinstall factory screw.
11. Install mud flap hole #5 to newly drilled hole #8 in liner using a capscrew (b) and flat washer (f), and secure using a flat washer (f), and nylock nut (j).
12. Repeat procedure for the passenger side.



Please check out our YouTube channel to see an install video for this application.





# 2024-C Traverse/Acadia

## Mud Flap Set, Rear

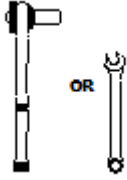
### Mounting Diagram & Instructions

Kit# GCR218R

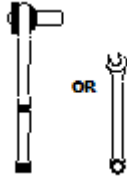
#### IMPORTANT:

**Manufacturer is not responsible for negligent use of vehicle with mud flaps installed, including over-tightening of screws and bolts causing damage to vehicle or mud flaps.**

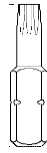
#### TOOLS REQUIRED-



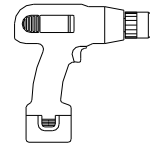
7/16" Open Wrench or Socket Wrench



1/4" Open Wrench or Socket Wrench



T15 Torx Bit



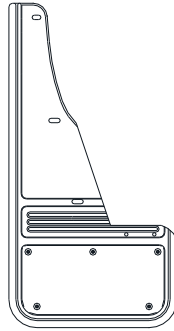
Electric or Rechargeable Drill



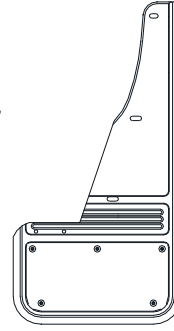
1/4" Drill Bit

#### FLAPS

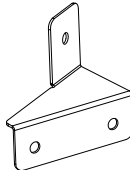
(1) Flap Assembly, Rear, DS



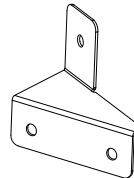
(1) Flap Assembly, Rear, PS



(1) Bracket, Driver Side  
Part #771247

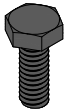


(1) Bracket, Passenger Side  
Part #771248



#### PARTS BAG # 771250

**a)** (6) Cap Screw  
1/4-20 UNC x 3/4", Blk Ox.  
Part #014070



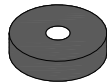
**b)** (4) Sht Metal Screw  
#8-18 x 1.25", Blk Ox.  
Part #016061



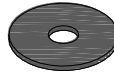
**c)** (2) Sht Metal Screw  
#8-18 x 1.5", Blk Ox.  
Part #016063



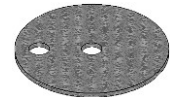
**d)** (8) Spacer Washer  
5/16" x 1" x 1/4" HDPE  
Part #018036



**e)** (2) Washer, Flat  
0.281" x 1" SS, Blk Ox.  
Part #018069



**f)** (4) Washer, Offset  
0.203" x 1.5" Blk Ox.  
Part #018080



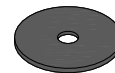
**g)** (2) Washer, Flat  
0.203" x 0.781" SS, Blk Ox.  
Part #018085



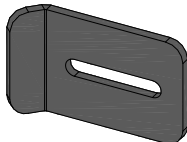
**h)** (6) Nut, Nylock  
1/4-20, SS  
Part # 025004



**i)** (2) Washer, Nylon  
0.203" x 0.885" Blk  
Part #054080

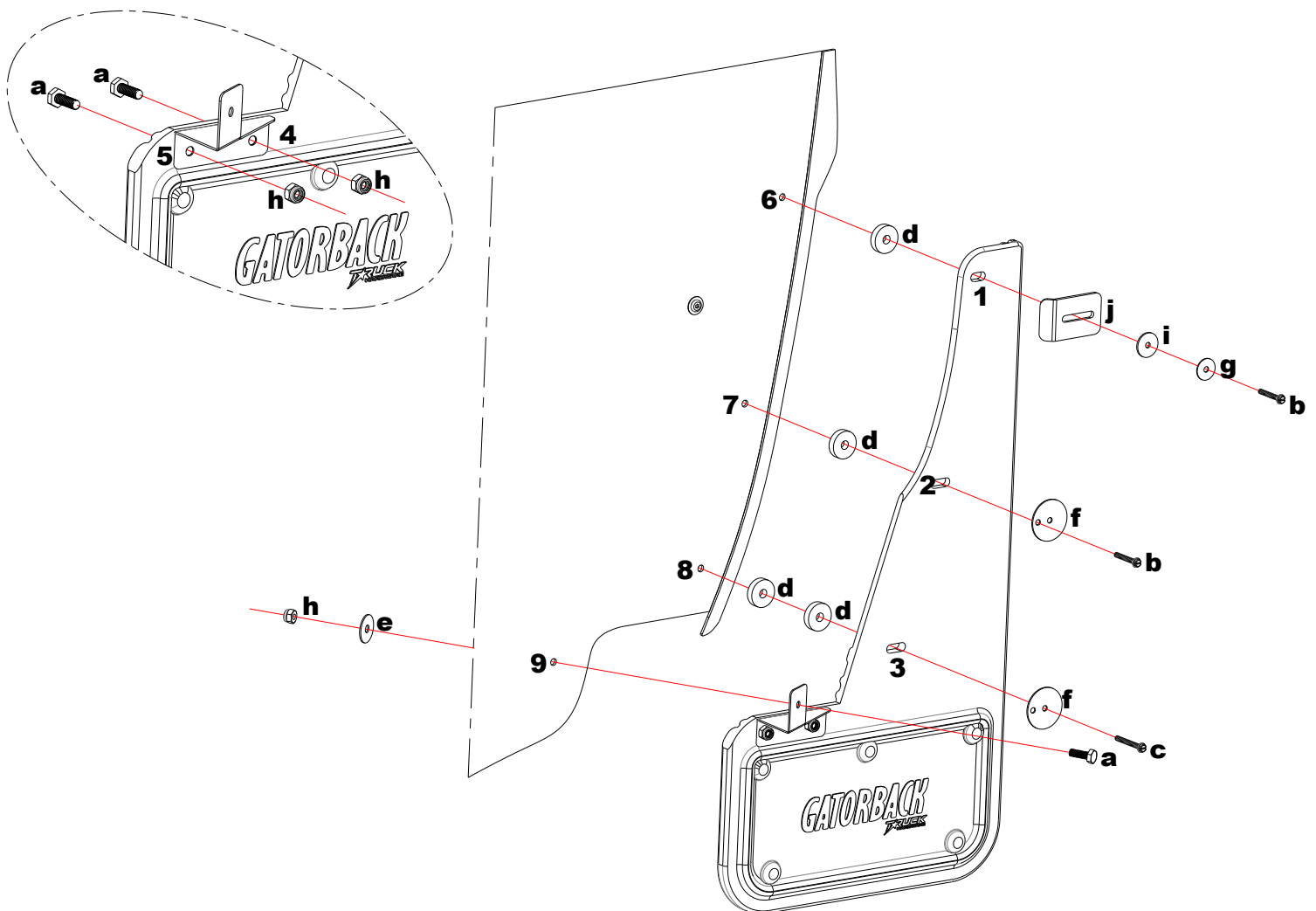


**j)** (2) J-Clamp, Universal  
1.5" x 2.5" Anod. Alum.  
Part #767417



## INSTALLATION – Please note, this install requires removal of tire.

2. Before you install your Mud Flap Set, see the diagram and parts list for all necessary parts. Start on the driver's side.
2. Remove the 3 factory screws from the fender. See holes #6 to #8.
3. Install the bracket to mud flap holes #4 & #5 using a capscrew (a) and secure using a nylock hex nut (h).
4. Loosely install mud flap hole #3 to factory hole using a machine screw (c) and offset washer (f), placing 2 spacer washers (d) between the rubber and the liner.
5. Loosely install mud flap hole #2 to factory hole using a machine screw (b) and offset washer (f), placing a spacer washer (d) between the rubber and the liner.
6. Loosely install mud flap hole #1 to factory hole using a machine screw (b), flat washer (g), nylon washer (i) and J-clamp (j), placing a spacer washer (d) between the rubber and the liner.
7. With a square or other levelling tool, ensure that the mud flap is level.
8. Carefully tighten all fasteners and ensure that the flap has remained level. We also strongly suggest tightening these using hand tools, **not** power tools.
9. Remove the tire.
10. Once everything is secure, hold the mud flap tight to the wheel well and use the bracket as a guide to drill a 1/4" hole into the factory liner. This becomes hole #9.
10. Install the bracket to hole #9 in the liner using a capscrew (a), and secure using a flat washer (e) and nylock hex nut (h).
11. Repeat procedure for the passenger side.



Please check out our YouTube channel to see an install video for this application.

