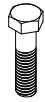
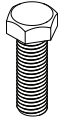


**PARTS BAG:**



a) (8) Capscrew, Pltd  
 3/8" - 16x1.5"  
 Part #014012



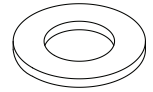
b) (2) Cap Screw, SS  
 5/8" - 11UNCx2"  
 Part #014021



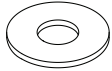
c) (2) Cap Screw, Pltd  
 5/16" - 18UNCx1.25"  
 Part #014089



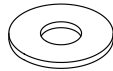
d) (6) Screw, Machine  
 8-32 x 1/2", SS  
 Part #012029



e) (4) Washer, Flat  
 5/8"  
 Part #018045



f) (12) Washer, Flat  
 3/8"  
 Part #018046



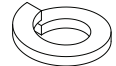
g) (2) Washer, Flat  
 5/16"  
 Part #018047



h) (6) Washer, Flat  
 3/16", Nylon  
 Part #054041



i) (2) Washer, Lock  
 5/16" Helicoil  
 Part #024002



j) (4) Washer, Lock  
 5/8" Helicoil  
 Part #024003



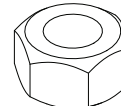
k) (12) Washer, Lock  
 3/8" Helicoil  
 Part #024006



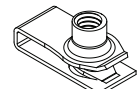
l) (6) Nut, M8 - 1.25  
 Serrated Flange Plated  
 Part #025029



m) (6) Nut, Nylock  
 #8-32, SS  
 Part #025005

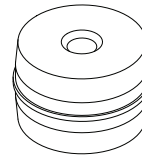


n) (2) Nut, Hex  
 5/8" - 11 UNC, SS  
 Part #025014  
 (Installed on board)

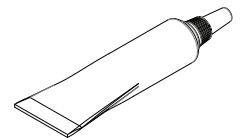


o) (2) Spring Nut, 5/16"-18UNC  
 Extended, 27/32" Reach  
 Part #028005

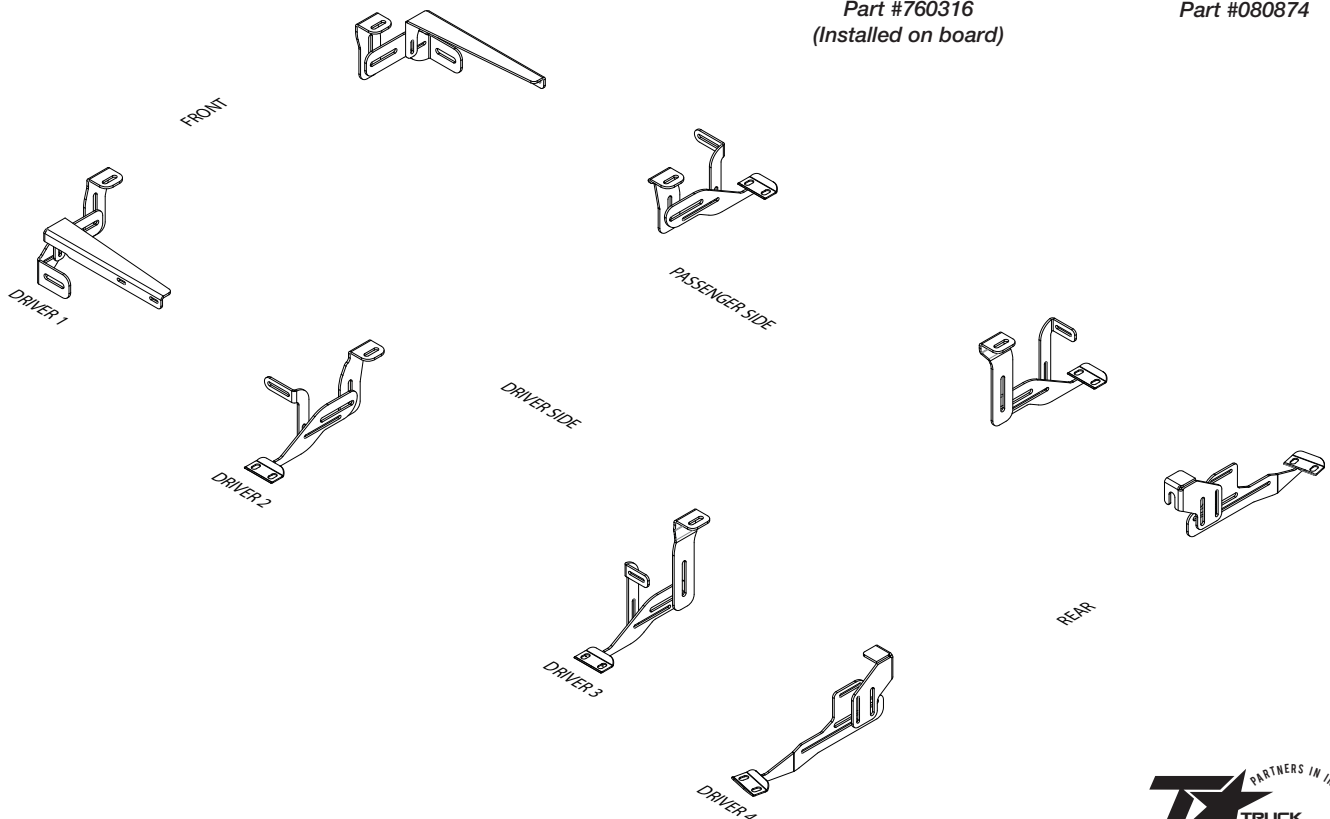
**MOUNTING DIAGRAM:**



p) (2) Insert, Poly 3" Tube  
 Part #760316  
 (Installed on board)



q) (1) Anti-Seize 0.25OZ Tube  
 Part #080874

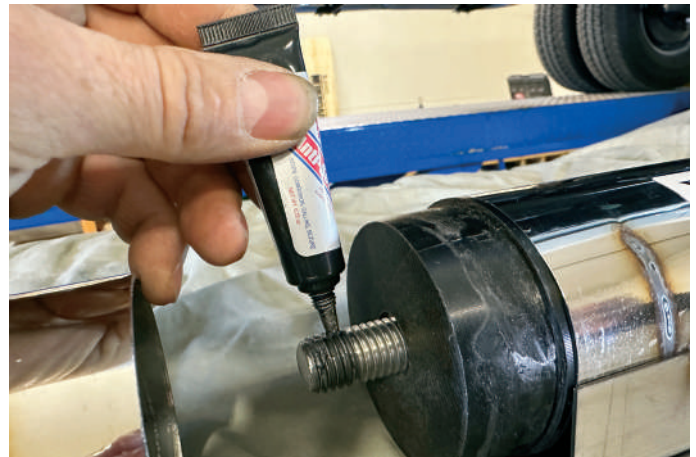


## INSTALLATION INSTRUCTIONS

1. Before you begin, review parts list to ensure all parts are included. Remove any steps that may be existing on the vehicle. Your brackets should come pre-assembled & numbered. Example: D1 = Driver front, with D2, D3 & D4 heading to the back of the vehicle. Start on the drivers side.



2. Lay out the 2 pieces of the drivers side board. Do this on a clean, soft space (ie. blanket) where the board won't be damaged or scratched. Prepare to assemble the board by removing the 5/8" hex nut, 5/8" lock washer & 5/8" flat washer from the rear of the step. Apply the provided anti-sieze to the threads on the bolt.



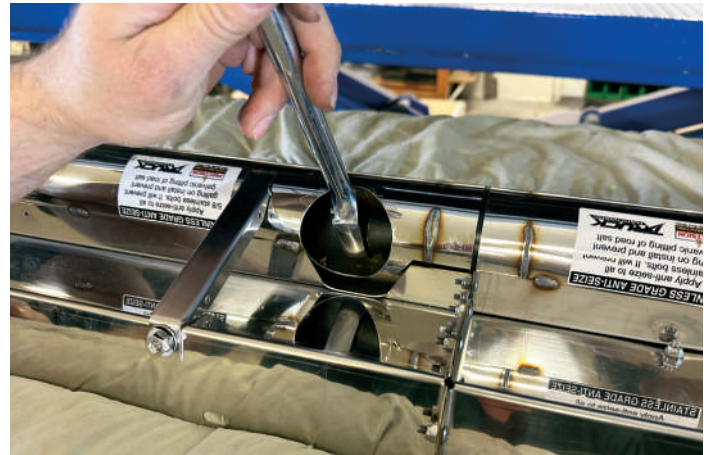
3. Slide the 2 pieces of the board together & reinstall the 5/8" flat washer, 5/8" lock washer & then 5/8" hex nut.



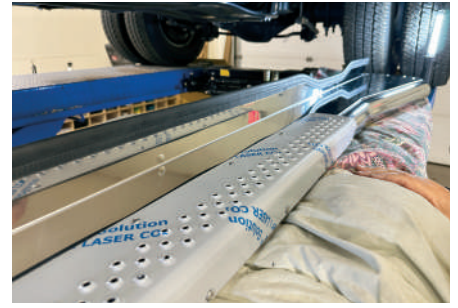
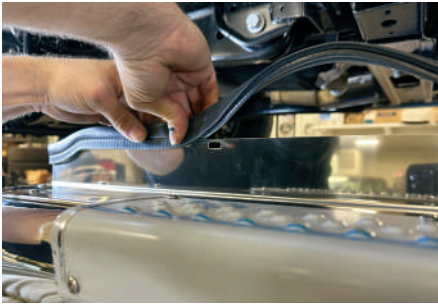
4. Add the anti-seize to the 3 x machine screws. Secure & align the flanges of the board together & affix with nylon lock nuts.



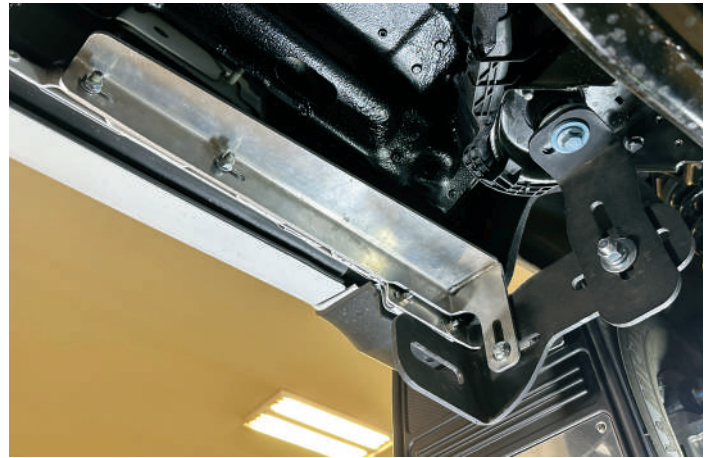
5. Tighten the bolts on the flanges. Then go back to the 5/8" bolt inside the tube, & using a torque wrench, tighten to 90ft lbs.



6. Now install the bulb seal to the header on the step. Start at one end & press seal down until you reach the end. Trim off any excess.



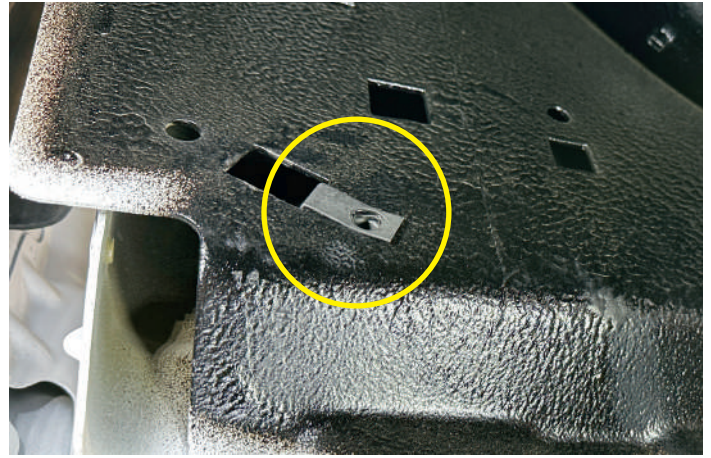
7. Now that the board is assembled, move to the front of the truck & start installing the brackets. Start with Driver 1. Remove the forward most cab mount bolt & install the bracket with the factory bolt. Then install the long aluminum brace to the pinch weld factory screws with the 2 supplied M8 serrated flange nuts.



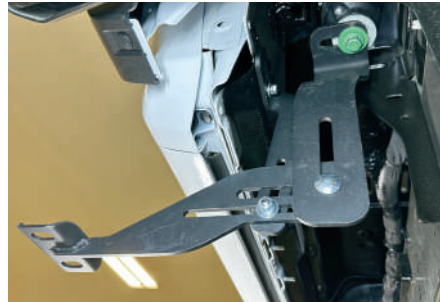
8. Go to the next location & remove the middle cab mount bolt & install the bracket with the factory bolt. Then install the upright brace to the pinch weld factory screw with supplied M8 serrated flange nut.



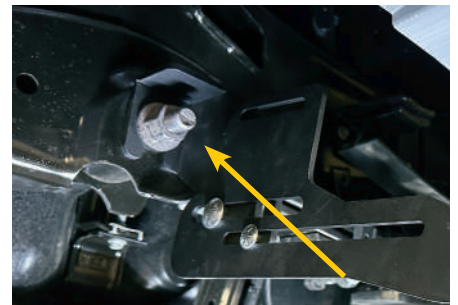
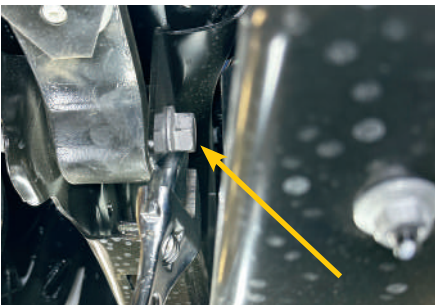
9. Moving on to the next bracket, remove cab mount bolts. Next, install a spring nut to the hole in the inner rocker as shown.



10. Install bracket to body mount. Then install 2nd vertical bracket to the spring nut using 5/16" cap screw, lock washer & washer.



11. Loosen front spring eye bolt & slide bracket behind bolt head. Tighten bolt ensuring bracket is oriented vertically.



12. Now you are ready to install the board to the installed brackets. Prepare the 5/8" cap screw by applying anti-seize. Start at the front & loosely install 5/8" cap screw, lock washer & washer into threaded tube mount.



13. Prepare 3/8" cap screws with anti-seize. Beginning with the rear bracket, loosely install 3/8" cap screws, lock washer & washer. Go to the other mounts & line up the holes in the board with the brackets & loosely install remaining hardware.



14. Level the board by adjusting the saddle bracket up or down until the board is levelled from front to back & also side to side, then secure all other loose fasteners.



15. Once this is done, remove the plastic frisket on the steps.



16. Repeat on passenger side.

