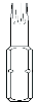


#### IMPORTANT:

Manufacturer is not responsible for negligent use of vehicle with mud flaps installed, including over-tightening of screws and bolts causing damage to vehicle or mud flaps.

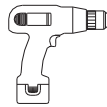
#### TOOLS REQUIRED-



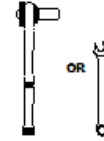
T15 Torx  
Bit



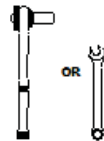
1/4" Drill  
Bit



Electric or Rechargeable  
Drill



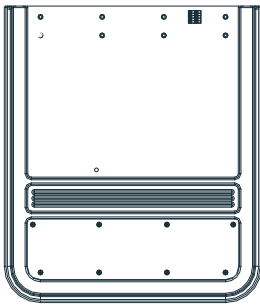
7/16" Open Wrench or  
Socket Wrench



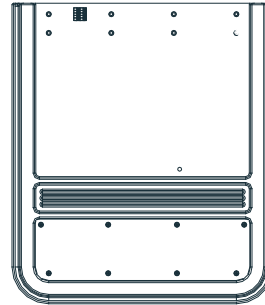
1/4" Open Wrench or  
Socket Wrench

#### FLAPS AND BRACKETS

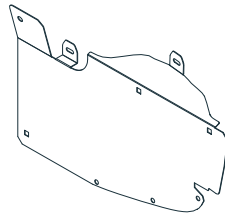
(1) Flap Assy  
Rear, DS



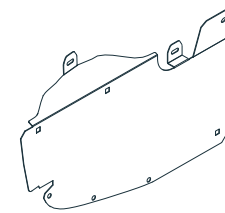
(1) Flap Assy  
Rear, PS



(1) Bracket  
Rear, DS  
Part #771298

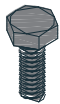


(1) Bracket  
Rear, PS  
Part #771299

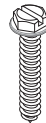


#### PARTS BAG # 771300

**a)** (2) Capscrew  
1/4-20 x 1" SS, Blk Ox.  
Part #014073



**b)** (4) Screw, Sheet Metal  
#8-18x1" SS  
Part #016054



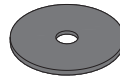
**c)** (10) Radiator Grill Nut  
#8 Thread, Zinc Plated  
Part #016049



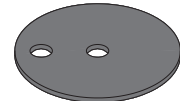
**d)** (14) Screw, Sheet Metal  
#8-18x1.25" SS, Blk Ox.  
Part #016061



**e)** (2) Washer, Flat  
0.203" x 1" SS, Blk Ox.  
Part #018070



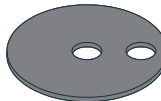
**f)** (12) Washer, Offset  
0.203" x 1.5" SS, Blk Ox.  
Part #018080



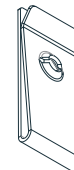
**g)** (4) Washer, Flat  
0.203" x 1" SS  
Part #018081



**h)** (2) Washer, Offset  
0.281" x 1.5" SS, Blk Ox.  
Part #018087



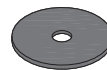
**i)** (6) Spring Nut  
#8, 9/16" Reach, SS  
Part #028004



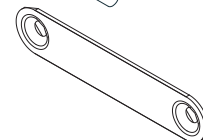
**j)** (2) Sprint Nut  
1/4-20, 27/32" Reach  
Part #028011



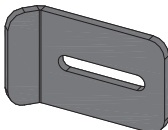
**k)** (2) Washer, Nylon, Blk  
0.203" x 0.885" x 0.06"  
Part #054080



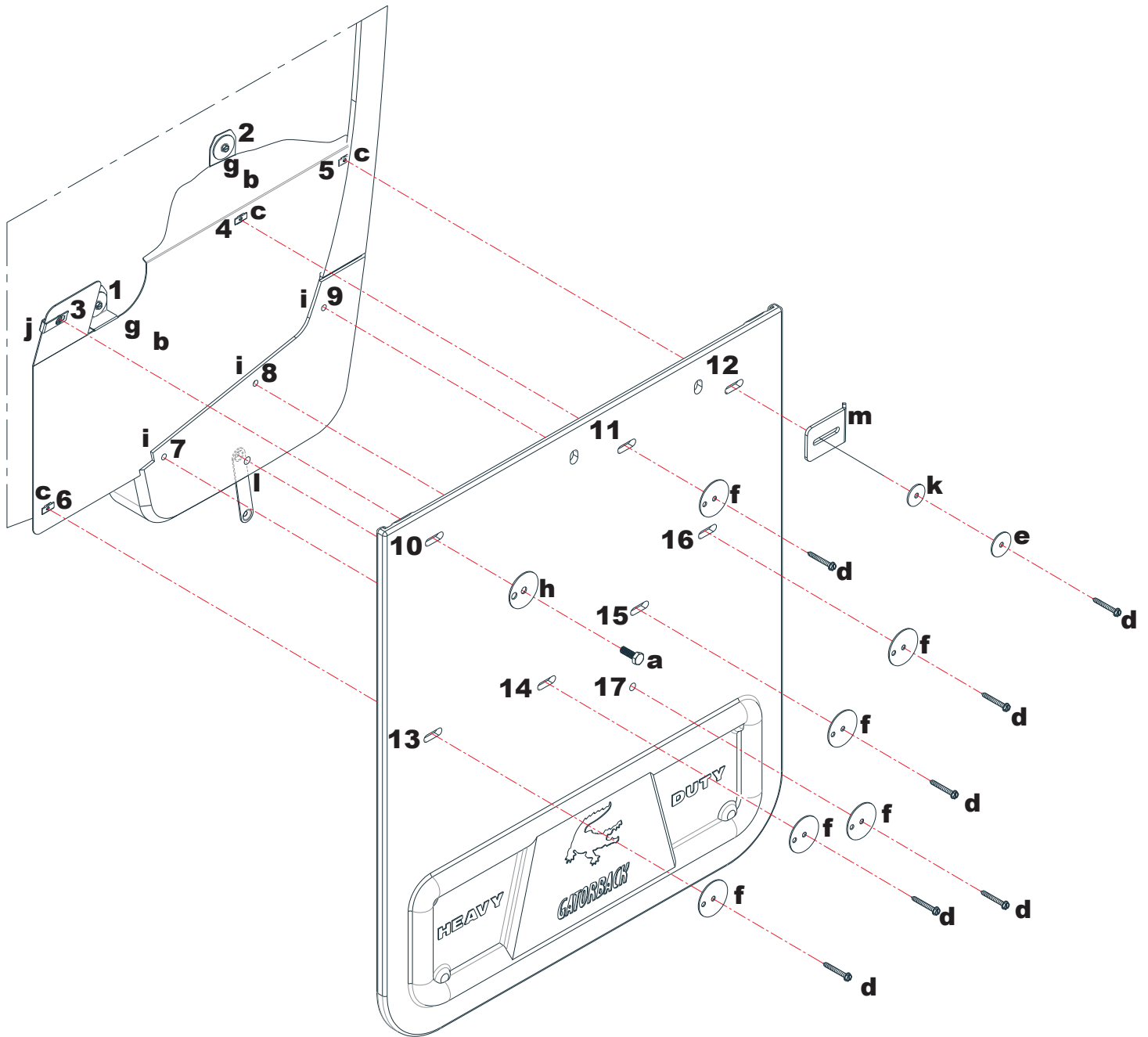
**l)** (2) Washer Plate  
2 Hole  
Part #759549



**m)** (2) J-Clamp, Alum.  
1.5" x 2.5"  
Part #767417



# INSTALLATION GUIDE FOR GM DUALY MUDFLAP WITH LINER - DIAGRAM

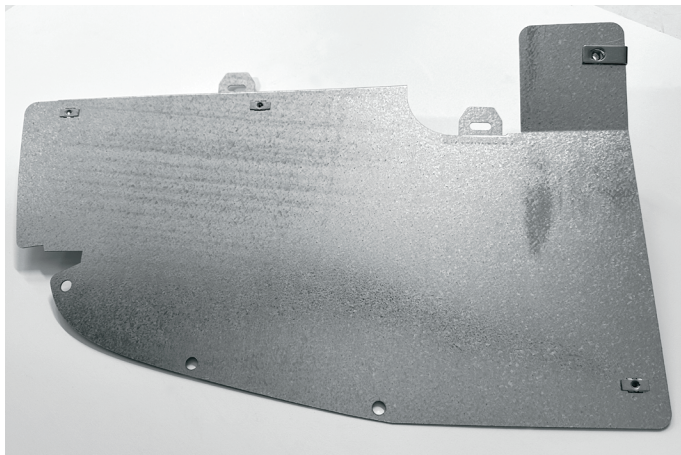
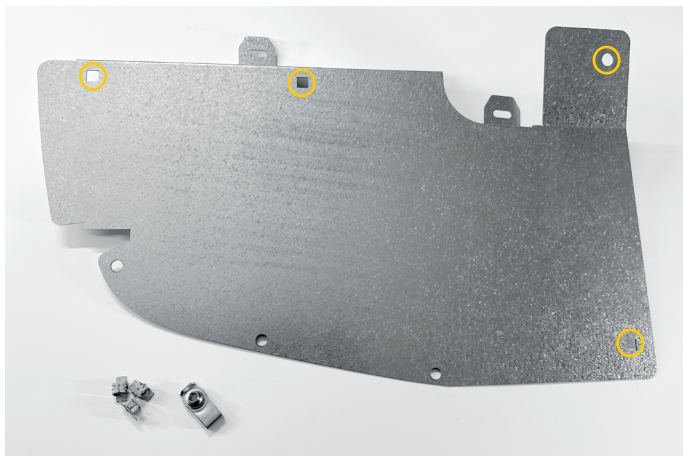


# INSTALLATION GUIDE FOR GM DUALY MUDFLAP WITH LINER - 1

Before installation, check diagram & parts list to ensure all parts are accounted for. Please contact Truck Hardware if parts are missing.

**\*Please note: passenger side shown here**

1. Start by installing 3 Radiator Grill Nuts (c) into the square holes & 1 Spring Nut (j) to the upper bracket tab as shown below



2. Remove the 3 screws from factory guard & 2 screws from the liner. Pull down guard & pull out the bottom of the liner



3. Remove factory Spring Nuts as shown

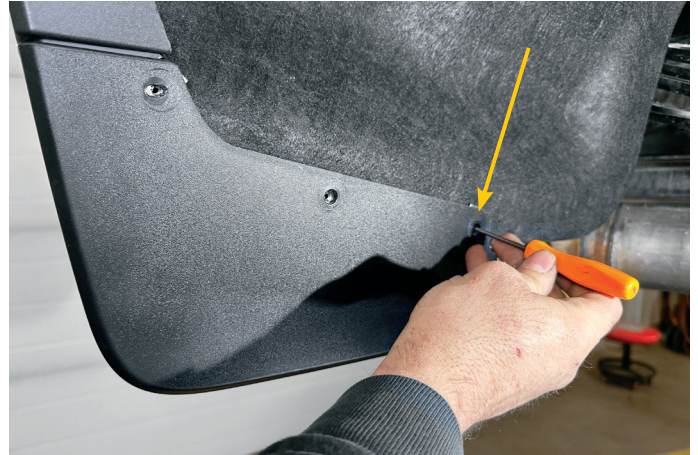


## INSTALLATION GUIDE FOR GM DUALY MUDFLAP WITH LINER - 2

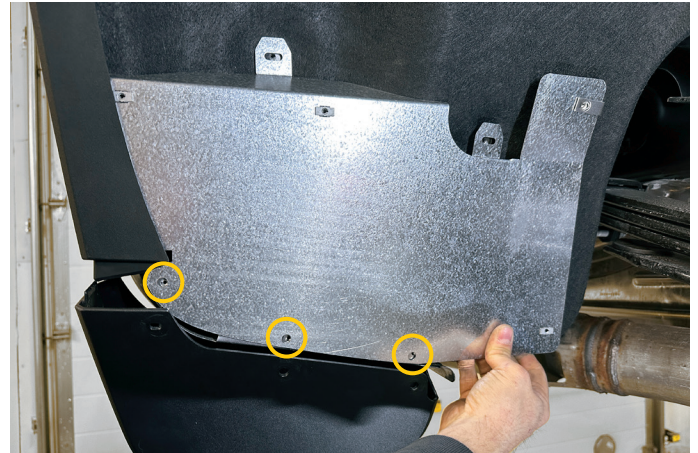
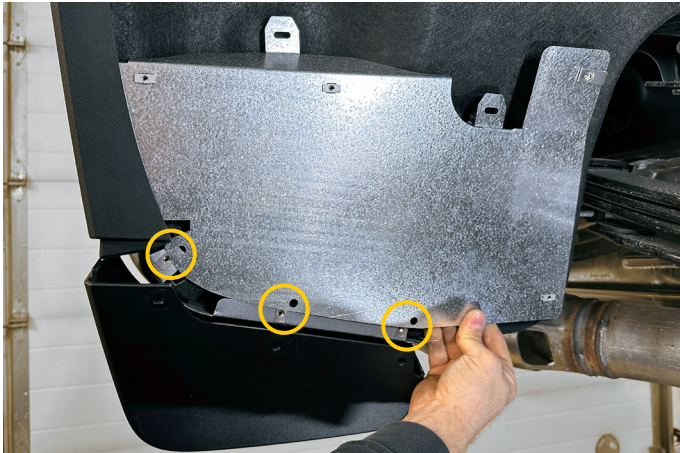
4. Push liner back behind sheet metal & install the provided stainless steel Spring Nuts



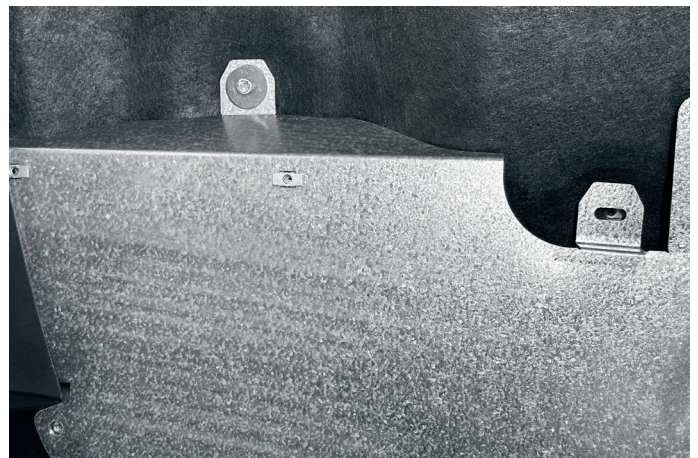
5. Temporarily reposition factory guard back in place to ensure the Spring Clips are properly aligned with the factory holes



6. Pull the factory guard back down so you can position the bracket in front of the sheet metal but behind the factory guard. Align the 3 bottom holes of the bracket with the factory holes as shown

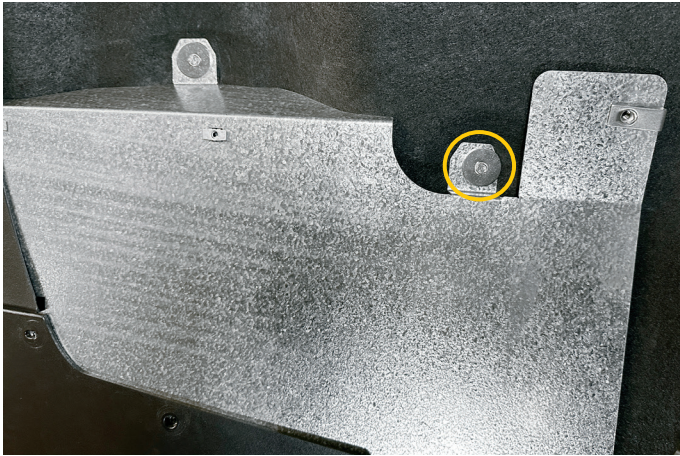


7. Start by loosely installing the upper bracket tab to the factory hole using Sheet Metal Screw (b) & Flat Washer (g)

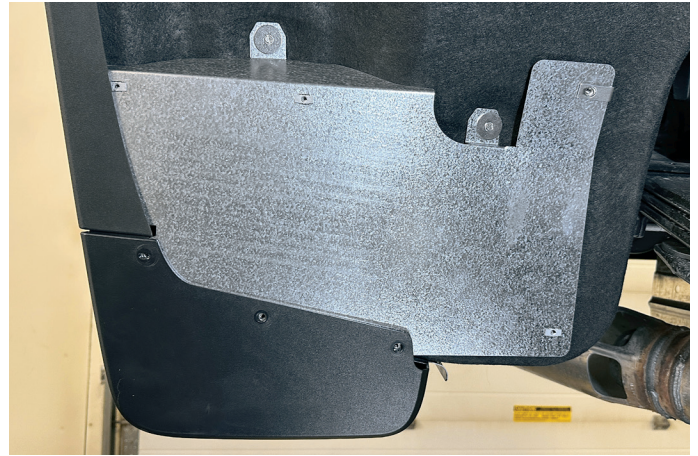


## INSTALLATION GUIDE FOR GM DUALY MUDFLAP WITH LINER - 3

8. Loosely install second bracket tab using the same hardware as step 7



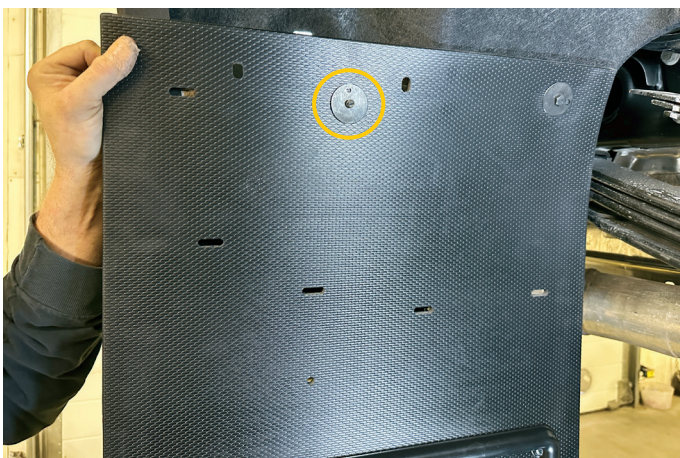
9. Push factory guard back into place



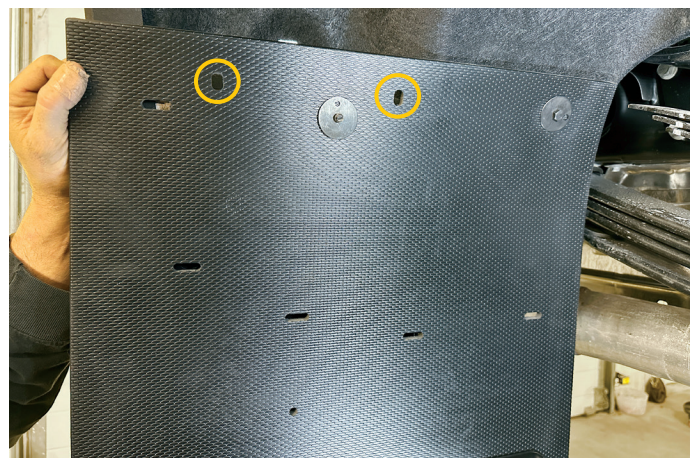
10. Loosely install the mudflap by starting with the last tab on the bracket (see hole #10 on diagram) using Cap Screw (a) & Offset Washer (f)



11. Move to the centre upper hole & loosely install Sheet Metal Screw (d) & Offset Washer (f) to the bracket.

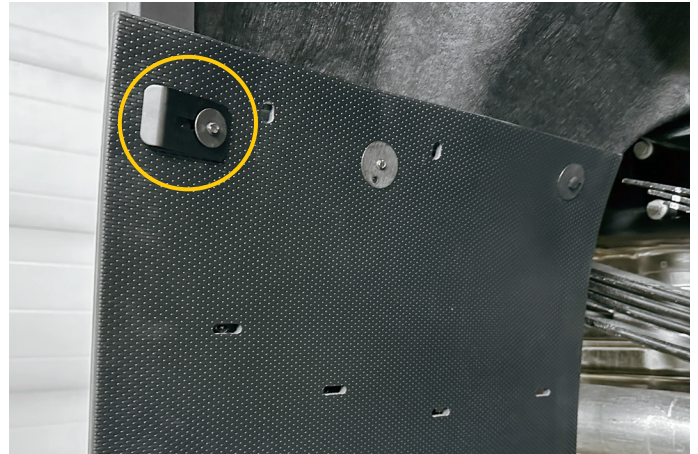


12. Please note: the circled holes are for drainage, not for install



## INSTALLATION GUIDE FOR GM DUALY MUDFLAP WITH LINER - 4

13. Loosely install a Sheet Metal Screw (d) with Black Flat Washer (e), Nylon Washer (k) & J-Clamp (m) into the outer most hole on the upper portion of the mudflap. This clamp provides added pressure, ensuring the mudflap is held tight against the fender



14. Moving to the second row of holes (below what was just installed), loosely install Sheet Metal Screws (d) & Offset Washer (f) into the remaining four holes



15. Use a level to ensure the mudflap is straight. Tighten all fasteners by hand so as not to overtighten



## INSTALLATION GUIDE FOR GM DUALY MUDFLAP WITH LINER - 5

16. Once fasteners are secure, carefully drill a 1/4" hole through mudflap hole #17 in order to create a hole in the factory guard.  
Be careful to drill through the first layer only



17. Insert Washer Plate (l) through the hole on the underside of the factory guard & align with the newly drilled hole. Secure mudflap using Sheet Metal Screw (d) & Flat Washer (f)



18. Tuck washer plate up inside factory guard & tighten

